

**HOUSTON PUBLIC MEDIA**  
(A Division of the University of Houston System)  
Independent Auditor's Report and Financial Statements  
August 31, 2017 and 2016



**HOUSTON PUBLIC MEDIA**  
(A Division of the University of Houston System)

**Table of Contents**

	<b>Page</b>
Independent Auditor's Report	1
Management's Discussion and Analysis	3
Basic Financial Statements	
Statements of Net Position	12
Statements of Revenues, Expenses and Changes in Net Position	14
Statements of Cash Flows	15
Notes to Basic Financial Statements	17
Required Supplementary Information	
Schedule of Houston Public Media's Proportionate Share of the Net Pension Liability	39
Schedule of Houston Public Media's Contributions	40
Supplementary Information	
Schedule 1 – Primary Institution Schedule of Functional Expenses – 2017	41
Schedule 2 – Component Unit (HPMF) Schedule of Functional Expenses – 2017	42
Schedule 3 – Primary Institution Schedule of Functional Expenses – 2016	43
Schedule 4 – Component Unit (HPMF) Schedule of Functional Expenses – 2016	44

## Independent Auditor's Report

Board of Regents  
University of Houston System  
Houston, Texas

We have audited the accompanying financial statements of the business-type activities and the discretely presented component unit of Houston Public Media (the Stations), a division of the University of Houston System (the UH System), as of and for the years ended August 31, 2017 and 2016, and the related notes to the financial statements, which collectively comprise the Stations' basic financial statements as listed in the table of contents.

### *Management's Responsibility for the Financial Statements*

Management is responsible for the preparation and fair presentation of these financial statements in accordance with accounting principles generally accepted in the United States of America; this includes the design, implementation and maintenance of internal control relevant to the preparation and fair presentation of financial statements that are free from material misstatement, whether due to fraud or error.

### *Auditor's Responsibility*

Our responsibility is to express opinions on these financial statements based on our audits. We conducted our audits in accordance with auditing standards generally accepted in the United States of America. Those standards require that we plan and perform the audit to obtain reasonable assurance about whether the financial statements are free from material misstatement.

An audit involves performing procedures to obtain audit evidence about the amounts and disclosures in the financial statements. The procedures selected depend on the auditor's judgment, including the assessment of the risks of material misstatement of the financial statements, whether due to fraud or error. In making those risk assessments, the auditor considers internal control relevant to the entity's preparation and fair presentation of the financial statements in order to design audit procedures that are appropriate in the circumstances, but not for the purpose of expressing an opinion on the effectiveness of the entity's internal control. Accordingly, we express no such opinion. An audit also includes evaluating the appropriateness of accounting policies used and the reasonableness of significant accounting estimates made by management, as well as evaluating the overall presentation of the financial statements.

We believe that the audit evidence we have obtained is sufficient and appropriate to provide a basis for our audit opinions.

### *Opinions*

In our opinion, the financial statements referred to above present fairly, in all material respects, the respective financial position of the business-type activities and the discretely presented component unit of the Stations as of August 31, 2017 and 2016, and the respective changes in financial position and, where applicable, cash flows thereof for the years then ended in accordance with accounting principles generally accepted in the United States of America.

***Emphasis of Matter***

As discussed in Note 1, the financial statements present only the financial statements of the Stations, and do not purport to, and do not, present fairly the financial position of the UH System as of August 31, 2017 and 2016, the changes in its financial position or its cash flows for the years then ended, in accordance with accounting principles generally accepted in the United States of America. Our opinions are not modified with respect to this matter.

***Other Matters***

***Required Supplementary Information***

Accounting principles generally accepted in the United States of America require that the management's discussion and analysis and pension information listed in the table of contents be presented to supplement the basic financial statements. Such information, although not part of the basic financial statements, is required by the Governmental Accounting Standards Board, who considers it to be an essential part of financial reporting for placing the basic financial statements in an appropriate operational, economic or historical context. We have applied certain limited procedures to the required supplementary information in accordance with auditing standards generally accepted in the United States of America, which consisted of inquiries of management about the methods of preparing the information and comparing the information for consistency with management's responses to our inquiries, the basic financial statements and other knowledge we obtained during our audits of the basic financial statements. We do not express an opinion or provide any assurance on the information because the limited procedures do not provide us with sufficient evidence to express an opinion or provide any assurance.

***Supplementary Information***

Our audits were conducted for the purpose of forming opinions on the financial statements that collectively comprise the Stations' basic financial statements. The supplementary information listed in the table of contents is presented for purposes of additional analysis and is not a required part of the basic financial statements. Such information is the responsibility of management and was derived from and relates directly to the underlying accounting and other records used to prepare the basic financial statements. Such information has been subjected to the auditing procedures applied in the audits of the basic financial statements and certain additional procedures, including comparing and reconciling such information directly to the underlying accounting and other records used to prepare the basic financial statements or to the basic financial statements themselves, and other additional procedures in accordance with auditing standards generally accepted in the United States of America. In our opinion, the supplementary information is fairly stated in all material respects in relation to the basic financial statements as a whole.

**BKD, LLP**

Houston, Texas  
March 15, 2018

**HOUSTON PUBLIC MEDIA**  
(A Division of the University of Houston System)

Management's Discussion and Analysis

Years Ended August 31, 2017 and 2016

**Introduction**

The following Management's Discussion and Analysis (MD&A) provides an overview of the activities and the financial position of Houston Public Media (the Stations), a division of the University of Houston (UH) System (the UH System), as of and for the years ended August 31, 2017 and 2016. This MD&A offers a summary of significant current year activities of the Stations, resulting changes in net position and currently known economic conditions and facts. This analysis should be read in conjunction with the Stations' financial statements and the notes to the financial statements. Responsibility of the financial statements, related note disclosures and MD&A rests with the Stations' management.

The Stations, licensed to the Board of Regents of the UH System, are located at the UH System's Central campus and are a division of UH. Houston Public Media Foundation (HPMF) is a legally separate and tax-exempt entity meeting all of the following criteria to be discretely presented as a component unit. These criteria are:

- The economic resources received or held by the separate organization are entirely or almost entirely for the direct benefit of the primary government, its component units or its constituents.
- The primary government, or its component units, is entitled to, or has the ability to otherwise access, a majority of the economic resources received or held by the separate organization.
- The economic resources received or held by an individual organization that the specific primary government, or its component units, is entitled to, or has the ability to otherwise access, are significant to that primary government.

**Overview of the Financial Statements**

The Stations herewith present their financial statements for fiscal years ended August 31, 2017 and 2016. The financial statements have been prepared in accordance with the standards of the Governmental Accounting Standards Board (GASB), which establishes accounting principles generally accepted in the United States of America for state and local governments. The three primary financial statements presented are the statement of net position; the statement of revenues, expenses and changes in net position; and the statement of cash flows. The information contained in the financial statements of the Stations is incorporated within the UH System's Annual Financial Report.

**Financial Statements**

The financial statements consist of the following:

The *statement of net position* reflects the Stations' assets, deferred outflows of resources, liabilities and deferred inflows of resources using the economic resources measurement focus and accrual basis of accounting, and represents the financial position as of the conclusion of the fiscal year. Net position is equal to assets and deferred outflows of resources minus liabilities and deferred inflows of resources. Unrestricted net position is available to the Stations for any lawful purpose. Unrestricted net position often has constraints imposed by management, which can be removed or modified. Net investment in capital assets represents the original acquisition value of capital assets, net of accumulated depreciation and outstanding debt obligations related to those capital assets. Restricted net position represents net position that can be utilized only in accordance with third-party imposed restrictions.

**HOUSTON PUBLIC MEDIA**  
(A Division of the University of Houston System)

Management's Discussion and Analysis

Years Ended August 31, 2017 and 2016

The *statement of revenues, expenses and changes in net position* identifies operating revenues received by the Stations. Additionally, the operating expenses incurred by the Stations during the fiscal year are displayed. Any revenues or expenses resulting from other than operations would also be displayed on this statement.

The *statement of cash flows* reflects the inflows and outflows of cash and cash equivalents and shows the various cash activities by type, reconciling the beginning cash and cash equivalents amount to the ending cash and cash equivalents amount, which is shown on the statement of net position described above. In addition, this statement reconciles cash flows from operating activities to operating income (loss) on the statement of revenues, expenses and changes in net position described above.

This MD&A uses the prior fiscal year as a reference point in illustrating issues and trends for determining whether the Stations' financial health may have improved or deteriorated.

**Condensed Financial Information**

**Summary of Net Position**

	<u>2017</u>	<u>2016</u>	<u>2015</u>
Assets:			
Current assets	\$ 1,289,039	668,387	1,389,903
Capital assets, net	5,192,606	5,503,009	15,741,181
Other noncurrent assets	1,545,593	1,573,143	1,590,346
Total assets	<u>8,027,238</u>	<u>7,744,539</u>	<u>18,721,430</u>
Deferred outflows of resources – pension	769,441	640,992	531,412
Total assets and deferred outflows of resources	<u>\$ 8,796,679</u>	<u>8,385,531</u>	<u>19,252,842</u>
Liabilities:			
Current liabilities	\$ 10,773,903	10,152,816	8,350,933
Noncurrent liabilities	3,881,471	3,686,266	11,911,693
Total liabilities	<u>14,655,374</u>	<u>13,839,082</u>	<u>20,262,626</u>
Deferred inflows of resources – pension	443,210	546,822	908,600
Total liabilities and deferred inflows of resources	<u>\$ 15,098,584</u>	<u>14,385,904</u>	<u>21,171,226</u>
Net position:			
Net investment in capital assets	\$ 5,017,529	5,209,693	6,526,768
Restricted for endowment funds	1,545,593	1,439,795	1,458,060
Unrestricted (deficit)	<u>(12,865,027)</u>	<u>(12,649,861)</u>	<u>(9,903,212)</u>
Total net position (deficit)	<u>\$ (6,301,905)</u>	<u>(6,000,373)</u>	<u>(1,918,384)</u>

**HOUSTON PUBLIC MEDIA**  
(A Division of the University of Houston System)

Management's Discussion and Analysis  
Years Ended August 31, 2017 and 2016

**Summary of Revenues, Expenses and Changes in Net Position**

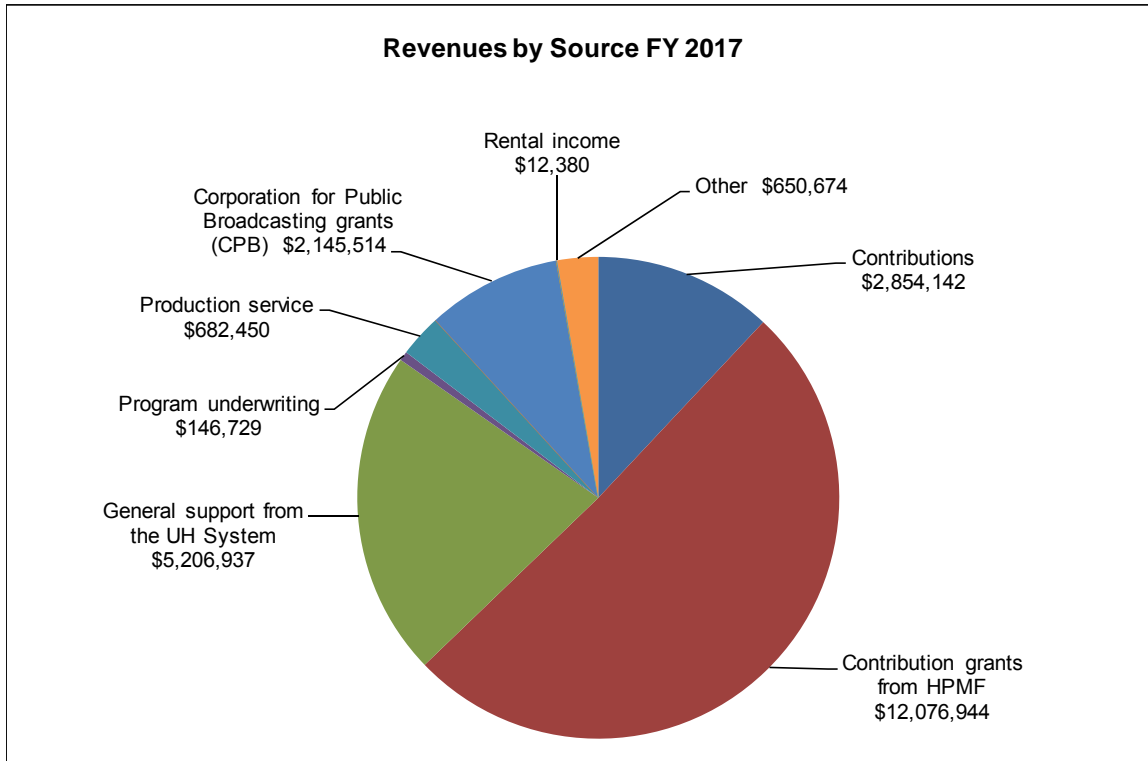
	<b>2017</b>	<b>2016</b>	<b>2015</b>
Operating revenues	\$ 23,775,770	23,564,590	24,824,814
Operating expenses	24,183,100	26,968,328	25,704,252
Operating loss	(407,330)	(3,403,738)	(879,438)
 Nonoperating income (loss):			
Loss from sale of KUHA	-	(659,988)	-
Additions to endowment	(56,066)	(54,336)	-
Gain (loss) from endowment	161,864	36,073	(111,244)
Change in net position	(301,532)	(4,081,989)	(990,682)
Net position (deficit), beginning of year	(6,000,373)	(1,918,384)	(927,702)
Net position (deficit), end of year	\$ (6,301,905)	(6,000,373)	(1,918,384)

Operating revenues include sources that are primarily used to provide services to the Stations' viewers and listeners. The following schedule presents a summary and comparison of revenues for the fiscal years ended August 31, 2017, 2016 and 2015:

<b>Revenues by Source</b>	<b>FY17</b>		<b>FY16</b>		<b>FY15</b>		<b>2017-2016 Increase (Decrease)</b>		<b>2016-2015 Increase (Decrease)</b>	
	(A) Amount	% of Total	(B) Amount	% of Total	(C) Amount	% of Total	(A-B) Amount	% of Total	(B-C) Amount	% of Total
<u>Operating revenues:</u>										
Contributions	\$ 2,854,142	12%	2,588,997	11%	2,718,660	11%	265,145	126%	(129,663)	10%
Contribution grants from HPMF	12,076,944	51%	8,135,904	35%	8,852,201	36%	3,941,040	1866%	(716,297)	57%
General support from the UH System	5,206,937	22%	6,609,857	28%	5,925,663	24%	(1,402,920)	-664%	684,194	-54%
Program underwriting	146,729	1%	3,557,499	15%	3,846,511	15%	(3,410,770)	-1615%	(289,012)	23%
Production service	682,450	3%	103,431	0%	105,873	1%	579,019	274%	(2,442)	0%
Production grants from HPMF Corporation for Public	-	0%	-	0%	175,000	1%	-	0%	(175,000)	14%
Broadcasting (CPB) grants	2,145,514	9%	2,338,322	10%	2,528,008	10%	(192,808)	-91%	(189,686)	15%
Special events	-	0%	-	0%	78,040	0%	-	0%	(78,040)	6%
Other	663,054	2%	230,580	1%	594,858	2%	432,474	205%	(364,278)	29%
Total operating revenues	\$ 23,775,770	100%	23,564,590	100%	24,824,814	100%	211,180	1%	(1,260,224)	-5%

**HOUSTON PUBLIC MEDIA**  
(A Division of the University of Houston System)

Management's Discussion and Analysis  
Years Ended August 31, 2017 and 2016

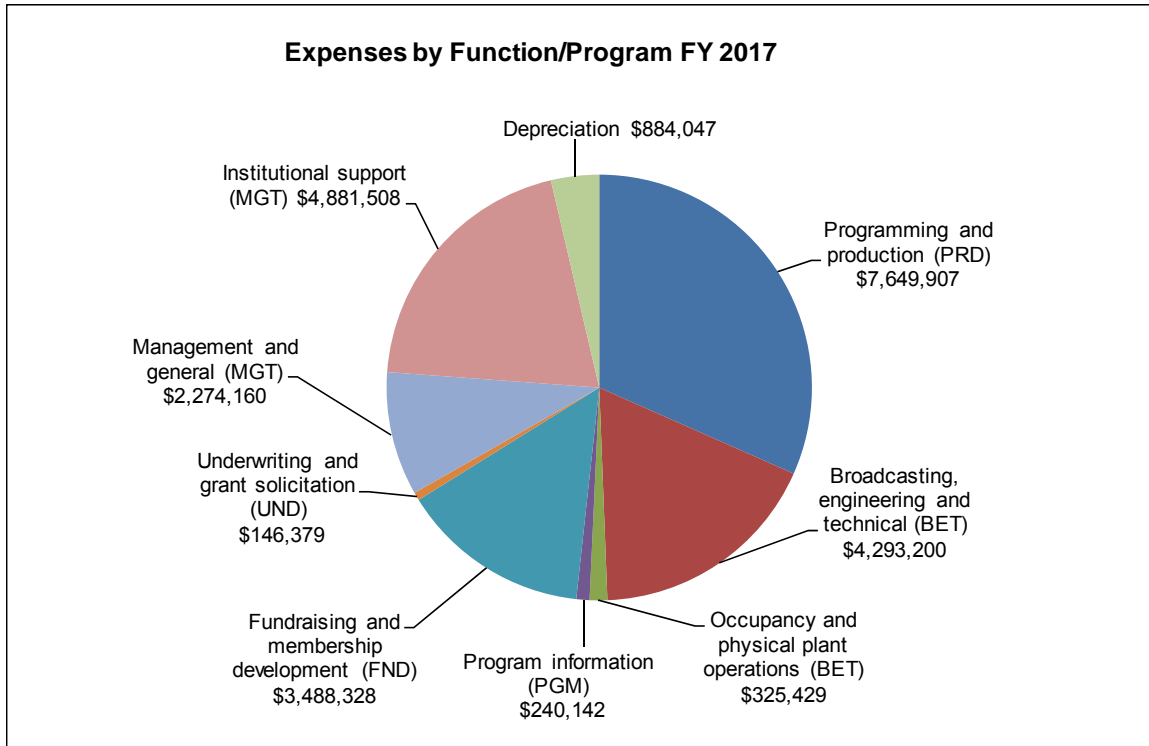


Operating expenses are the costs necessary to provide those services and to fulfill the mission of the Stations. Alternatively, operating expenses categorized using the natural classification method are disclosed in the schedules of functional expenses. The following schedule presents a summary and comparison of expense for the fiscal years ended August 31, 2017, 2016 and 2015:

Expenses by Function	FY17		FY16		FY15		2017-2016 Increase (Decrease)		2016-2015 Increase (Decrease)	
	(A) Amount	% of Total	(B) Amount	% of Total	(C) Amount	% of Total	(A-B) Amount	% of Total	(B-C) Amount	% of Total
<u>Operating expenses:</u>										
Programming and production (PRD)	\$ 7,649,907	32%	7,794,784	29%	7,681,909	30%	(144,877)	5%	112,875	9%
Broadcasting, engineering and technical (BET)	4,293,200	18%	4,502,438	17%	4,570,872	18%	(209,238)	8%	(68,434)	-5%
Occupancy and physical plant operations (BET)	325,429	1%	480,161	2%	456,532	2%	(154,732)	6%	23,629	2%
Program information (PGM)	240,142	1%	306,274	1%	325,410	1%	(66,132)	2%	(19,136)	-2%
Fundraising and membership development (FND)	3,488,328	14%	3,410,365	13%	3,359,315	13%	77,963	-3%	51,050	4%
Underwriting and grant solicitation (UND)	146,379	1%	865,362	3%	447,321	2%	(718,983)	26%	418,041	33%
Management and general (MGT)	2,274,160	9%	2,556,117	9%	2,484,975	9%	(281,957)	10%	71,142	6%
Institutional support (MGT)	4,881,508	20%	6,129,696	23%	5,469,131	21%	(1,248,188)	45%	660,565	52%
Depreciation	884,047	4%	923,131	3%	908,787	4%	(39,084)	1%	14,344	1%
<b>Total operating expenses</b>	<b>\$ 24,183,100</b>	<b>100%</b>	<b>26,968,328</b>	<b>100%</b>	<b>25,704,252</b>	<b>100%</b>	<b>(2,785,228)</b>	<b>-10%</b>	<b>1,264,076</b>	<b>5%</b>



**HOUSTON PUBLIC MEDIA**  
(A Division of the University of Houston System)  
Management's Discussion and Analysis  
Years Ended August 31, 2017 and 2016



**Financial Highlights and Analysis**

*Assets and Liabilities – Fiscal Year 2017 Compared to Fiscal Year 2016*

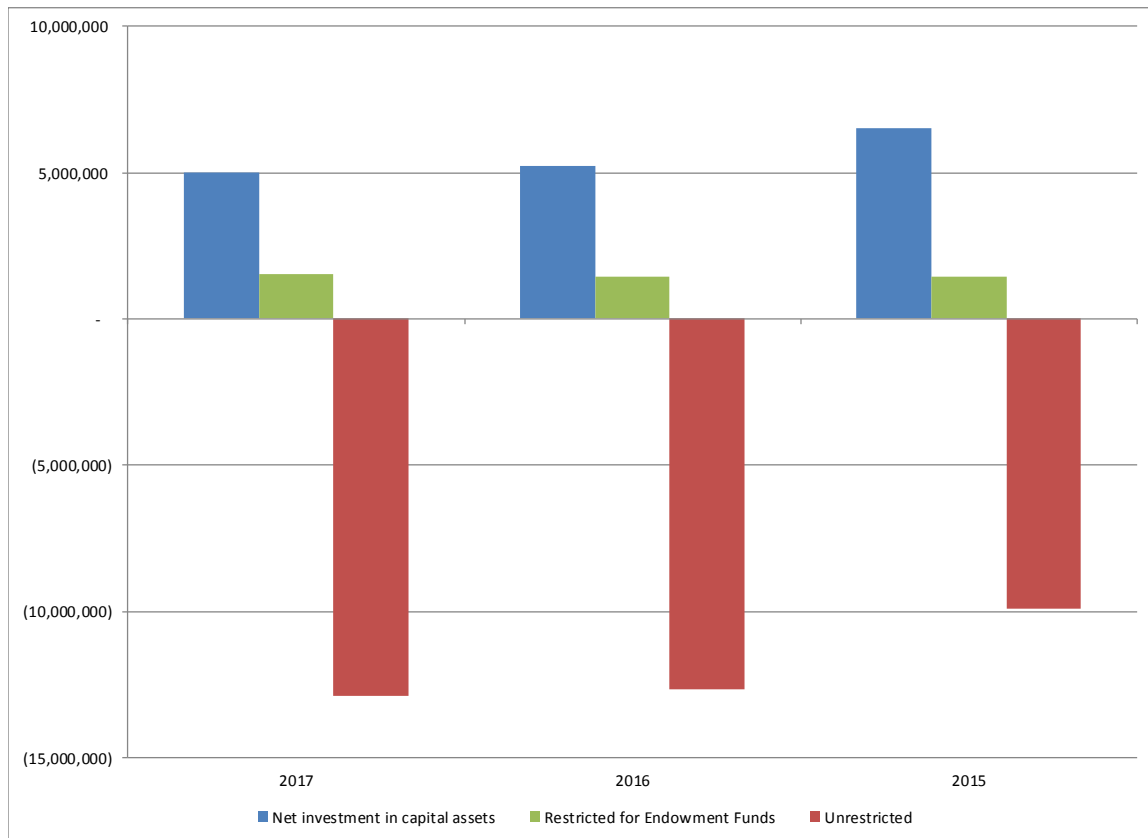
- Current assets increased by \$620,652 mainly due to increases in year-end accounts receivable adjustments due from the component unit.
- Capital assets decreased by \$310,403 mainly due to asset disposals related to obsolete KUHT master control equipment and current year depreciation on capital assets.
- Other noncurrent assets decreased by \$27,550 mainly due to the transition of noncurrent pledges receivable to current pledges receivable.
- Current liabilities increased by \$621,087 mainly due to the increase in the "Due to the UH System."
- Noncurrent liabilities increased by \$195,205 mainly due to an increase in the net pension liability.

**HOUSTON PUBLIC MEDIA**  
(A Division of the University of Houston System)  
Management's Discussion and Analysis  
Years Ended August 31, 2017 and 2016

***Assets and Liabilities – Fiscal Year 2016 Compared to Fiscal Year 2015***

- Current assets decreased by \$721,516 mainly due to decreases in accounts receivable.
- Capital assets decreased by \$10,238,172 mainly due to the sale of the KUHA tower and operating license.
- Other noncurrent assets decreased by \$17,203 mainly due to the current year's endowment fund distributions.
- Current liabilities increased by \$1,801,883 mainly due to the increases in the amount "Due to the UH System."
- Noncurrent liabilities decreased by \$8,225,427 mainly due to a reduction in notes payable related to the sale of the KUHA tower.

The following graph illustrates net position in the different categories for fiscal years 2017, 2016 and 2015:



**HOUSTON PUBLIC MEDIA**  
(A Division of the University of Houston System)  
Management's Discussion and Analysis  
Years Ended August 31, 2017 and 2016

***Operating Revenues – Fiscal Year 2017 Compared to Fiscal Year 2016***

Operating revenues increased by \$211,180 in FY17 mainly due to increases in the amount of general contributions and grants received from HPMF.

***Operating Revenues – Fiscal Year 2016 Compared to Fiscal Year 2015***

Operating revenues decreased by \$1,260,224 in FY16 mainly due to decreases in the amount of general contributions and grants received from HPMF and CPB. The Stations received an increase in indirect support provided by the UH System under the account titled "General Support from the UH System" which helped to offset the reduction in contributions and grants.

***Operating Expenses – Fiscal Year 2017 Compared to Fiscal Year 2016***

The Stations' expenses decreased by \$2,785,228 in FY17 due to decreased spending in programming and production, broadcasting, engineering and technical and management activities.

***Operating Expenses – Fiscal Year 2016 Compared to Fiscal Year 2015***

The Stations' expenses increased by \$1,264,076 in FY16 due to the following factors:

- PBS, NPR and other programming fees from the UH System increased 17%.
- Indirect support from the UH System increased by \$684,194 from FY15.
- Professional services related to underwriting and grant solicitation expenses increased by \$418,041 due to the Stations' outsourcing of its underwriting services.

**Capital Asset and Debt Administration**

As of the end of FY17, the Stations had \$5,192,606 of capital assets, net of accumulated depreciation. These assets included buildings and building improvements; furniture, equipment and vehicles; land and indefinite lived intangible assets.

Title to these assets resides with the UH System, which allocates custody of the assets to the Stations for its operational needs. Accountability for capital assets is consistent with policies established by the State of Texas. Assets are depreciated over their recommended useful lives. The Stations capitalize assets when the acquisition cost exceeds certain threshold values. Funds for the acquisition of capital assets are provided from the Stations' operating revenues.

The Stations do not separately issue long-term debt. During FY16, the Stations sold their KUHA station. The UH System allowed the Stations to settle their long-term note payable, which was issued to purchase KUHA, through bond defeasance. Proceeds from the KUHA sale were deposited into an escrow fund and were used to satisfy the outstanding principal due to the UH System of \$8,110,000.

**HOUSTON PUBLIC MEDIA**  
(A Division of the University of Houston System)  
Management's Discussion and Analysis  
Years Ended August 31, 2017 and 2016

***Budgetary Revenues***

The following table summarizes the Stations' final budget, actual results and variance for revenues for the year ended August 31, 2017:

	<b>Budgeted amounts final</b>	<b>Actual</b>	<b>Variance with final budget favorable (unfavorable)</b>
Operating revenues:			
Contributions	\$ 2,839,328	2,854,142	14,814
Contribution grants from HPMF	10,000,000	12,076,944	2,076,944
General support from the UH System	6,000,000	5,206,937	(793,063)
Program underwriting	200,000	146,729	(53,271)
Production service	500,000	682,450	182,450
Corporation for Public Broadcasting (CPB) grants	2,145,514	2,145,514	-
Rental income	-	12,380	12,380
Other	650,398	650,674	276
<b>Total operating revenues</b>	<b>\$ 22,335,240</b>	<b>23,775,770</b>	<b>1,440,530</b>

The actual versus budgeted revenue variances were due to the following:

- A change in the accounting process to strengthen internal controls by routing underwriting revenues through HPMF, resulting in increased grants from HPMF.
- A decrease in indirect support from the UH System.
- In an effort to continue the Stations' efforts to focus on a revenue model that is centralized around donor experiences, rental income, royalty income and special events income were not budgeted.

**HOUSTON PUBLIC MEDIA**  
(A Division of the University of Houston System)  
Management's Discussion and Analysis  
Years Ended August 31, 2017 and 2016

***Budgetary Expenses***

The following table summarizes the Stations' final budget, actual results and variance for expenses for the year ended August 31, 2017:

	<b>Budgeted amounts final</b>	<b>Actual</b>	<b>Variance with final budget favorable (unfavorable)</b>
Operating expenses:			
Programming and production (PRD)	\$ 8,380,000	7,649,907	730,093
Broadcasting, engineering and technical (BET)	4,300,000	4,293,200	6,800
Occupancy and physical plant operations (BET)	600,000	325,429	274,571
Program information (PGM)	246,000	240,142	5,858
Fundraising and membership development (FND)	2,469,924	3,488,328	(1,018,404)
Underwriting and grant solicitation (UND)	150,000	146,379	3,621
Management and general (MGT)	2,400,000	2,274,160	125,840
Institutional support (MGT)	6,000,000	4,881,508	1,118,492
Depreciation	900,000	884,047	15,953
	<u>25,445,924</u>	<u>24,183,100</u>	<u>1,262,824</u>
Total operating expenses	\$ <u>25,445,924</u>	<u>24,183,100</u>	<u>1,262,824</u>

The actual versus budgeted expense variances were due to the following:

- Operational efficiency resulted in decreased operating expenses in comparison to budgeted amounts in excess of \$1 million.
- Occupancy and Institutional Support expenses fluctuate based upon indirect support schedule calculations.
- Fundraising and Membership Development expenses exceeded the budget by more than \$1 million primarily due to the increased focus on donor-cultivating activities.

**Requests for Information**

Questions regarding the information provided in this Annual Financial Report or requests for additional financial information should be addressed to the Director of Finance, Houston Public Media at: KUHF-FM & KUHT-TV, 4343 Elgin, Houston, Texas 77204-0008.

**BASIC FINANCIAL STATEMENTS**

**HOUSTON PUBLIC MEDIA**  
(A Division of the University of Houston System)

Statements of Net Position  
August 31, 2017 and 2016

Assets	2017		2016	
	Primary institution	Component unit (HPMF)	Primary institution	Component unit (HPMF)
Current assets:				
Cash and equivalents	\$ -	997,540	-	767,546
Accounts receivable, net	343,011	858,846	596,649	605,007
Pledge receivable from HPMF	120,000	-	5,000	-
Grant receivable from HPMF	784,115	-	-	-
Pledge receivable	-	-	-	5,000
Restricted cash and equivalents	-	215,492	-	370,426
Film rights, net	41,913	-	54,730	-
Prepaid expenses	-	-	12,008	-
Total current assets	1,289,039	2,071,878	668,387	1,747,979
Noncurrent assets:				
Pledge receivable	-	-	-	133,348
Pledge receivable from HPMF	-	-	133,348	-
Capital assets, net	5,192,606	14,100	5,503,009	14,100
Investments restricted for innovation and sustainability grants	-	700,630	-	-
Investments restricted for endowment	1,545,593	1,189,840	1,439,795	1,200,370
Total noncurrent assets	6,738,199	1,904,570	7,076,152	1,347,818
Total assets	8,027,238	3,976,448	7,744,539	3,095,797
<b>Deferred Outflows of Resources</b>				
Pension-related	769,441	-	640,992	-
Total assets and deferred outflows of resources	\$ 8,796,679	3,976,448	8,385,531	3,095,797

See accompanying notes to basic financial statements.

**HOUSTON PUBLIC MEDIA**  
(A Division of the University of Houston System)

Statements of Net Position (Continued)

August 31, 2017 and 2016

	<u>2017</u>		<u>2016</u>	
	<u>Primary institution</u>	<u>Component unit (HPMF)</u>	<u>Primary institution</u>	<u>Component unit (HPMF)</u>
<b>Liabilities</b>				
Current liabilities:				
Due to the UH System	\$ 9,587,135	-	8,691,048	-
Pledge payable to primary institution	-	120,000	-	5,000
Grant payable to primary institution	-	784,115	-	-
Accounts payable	2,686	232,144	4,168	155,343
Note payable (KUHT server)	-	-	12,542	-
Note payable (HPM Chiller)	82,179	-	82,179	-
Accrued payroll	611,405	-	672,672	-
Unearned revenue	76,564	115,940	227,341	16,857
Employees' compensable leave	413,934	-	462,866	-
Total current liabilities	<u>10,773,903</u>	<u>1,252,199</u>	<u>10,152,816</u>	<u>177,200</u>
Noncurrent liabilities:				
Pledge payable to primary institution	-	-	-	133,348
Net pension liability	3,788,573	-	3,487,671	-
Note payable (KUHT server)	-	-	-	-
Note payable (HPM Chiller)	92,898	-	198,595	-
Total noncurrent liabilities	<u>3,881,471</u>	<u>0</u>	<u>3,686,266</u>	<u>133,348</u>
Total liabilities	14,655,374	1,252,199	13,839,082	310,548
<b>Deferred Inflows of Resources</b>				
Pension-related	443,210	-	546,822	-
Total liabilities and deferred inflows of resources	<u>15,098,584</u>	<u>1,252,199</u>	<u>14,385,904</u>	<u>310,548</u>
<b>Net Position</b>				
Net investment in capital assets	5,017,529	14,100	5,209,693	14,100
Restricted:				
Expendable for production and outreach programs	-	210,885	-	370,426
Nonexpendable	1,221,922	1,141,990	1,221,922	1,124,191
Expendable	323,671	748,480	217,873	76,179
Unrestricted (deficit)	<u>(12,865,027)</u>	<u>608,794</u>	<u>(12,649,861)</u>	<u>1,200,353</u>
Total net position (deficit)	<u>\$ (6,301,905)</u>	<u>2,724,249</u>	<u>(6,000,373)</u>	<u>2,785,249</u>

See accompanying notes to basic financial statements.



**HOUSTON PUBLIC MEDIA**  
(A Division of the University of Houston System)

Statements of Revenues, Expenses and Changes in Net Position  
Years Ended August 31, 2017 and 2016

	<b>2017</b>		<b>2016</b>	
	<b>Primary institution</b>	<b>Component unit (HPMF)</b>	<b>Primary institution</b>	<b>Component unit (HPMF)</b>
<b>Operating revenues:</b>				
Contributions	\$ 2,854,142	10,897,962	2,588,997	9,959,560
Contribution grants from HPMF	12,076,944	-	8,135,904	-
General support from the UH System	5,206,937	-	6,609,857	-
Program underwriting	146,729	4,039,763	3,557,499	814,237
Production service	682,450	13,543	103,431	30,271
Corporation for Public Broadcasting (CPB) grants	2,145,514	-	2,338,322	-
Other grants	-	716,857	-	680,177
Royalties	-	-	8,928	-
Rental income	12,380	-	12,700	-
Special events	-	-	-	25,311
Other	650,674	-	208,952	47,574
Total operating revenues	<u>23,775,770</u>	<u>15,668,125</u>	<u>23,564,590</u>	<u>11,557,130</u>
<b>Operating expenses:</b>				
Grants to primary institution	-	12,076,944	-	8,135,904
Programming and production (PRD)	7,649,907	99,807	7,794,784	61,727
Broadcasting, engineering and technical (BET)	4,293,200	375,331	4,502,438	48,328
Occupancy and physical plant operations (BET)	325,429	-	480,161	-
Program information (PGM)	240,142	5,227	306,274	6,093
Fundraising and membership development (FND)	3,488,328	1,783,258	3,410,365	1,999,257
Underwriting and grant solicitation (UND)	146,379	1,122,143	865,362	365,888
Management and general (MGT)	2,274,160	255,885	2,556,117	131,131
Institutional support (MGT)	4,881,508	-	6,129,696	-
Depreciation	884,047	-	923,131	-
Total operating expenses	<u>24,183,100</u>	<u>15,718,595</u>	<u>26,968,328</u>	<u>10,748,328</u>
Operating income (loss)	<u>(407,330)</u>	<u>(50,470)</u>	<u>(3,403,738)</u>	<u>808,802</u>
<b>Nonoperating income (loss):</b>				
Loss from sale of KUHA	-	-	(659,988)	-
Endowment contributions (distributions)	(56,066)	(91,832)	(54,336)	1,701
Gain from endowment	161,864	81,302	36,073	14,932
Total nonoperating income (loss)	<u>105,798</u>	<u>(10,530)</u>	<u>(678,251)</u>	<u>16,633</u>
Change in net position	<u>(301,532)</u>	<u>(61,000)</u>	<u>(4,081,989)</u>	<u>825,435</u>
Net position (deficit), beginning of year	<u>(6,000,373)</u>	<u>2,785,249</u>	<u>(1,918,384)</u>	<u>1,959,814</u>
Net position (deficit), end of year	<u>\$ (6,301,905)</u>	<u>2,724,249</u>	<u>(6,000,373)</u>	<u>2,785,249</u>

See accompanying notes to basic financial statements.

**HOUSTON PUBLIC MEDIA**  
(A Division of the University of Houston System)

Statements of Cash Flows

Years Ended August 31, 2017 and 2016

	<b>2017</b>	<b>2016</b>
	<b>Primary institution</b>	<b>Primary institution</b>
Cash flows from operating activities:		
Proceeds from contributions	\$ 2,872,490	10,723,841
Proceeds from Corporation for Public Broadcasting (CPB) grant	2,145,514	2,338,322
Proceeds from other grants	11,292,829	-
Proceeds from program underwriting	249,590	4,119,878
Proceeds from other revenues	1,345,504	334,011
Payments to suppliers for goods and services	(3,494,263)	(5,523,926)
Payments to employees	(8,255,628)	(8,474,425)
Payments for broadcasting fees	(3,894,615)	(4,171,405)
Payments for other expenses	(2,425,845)	(1,161,650)
Net cash used in operating activities	(164,424)	(1,815,354)
Cash flows from noncapital financing activities:		
Advances from the UH System	896,087	2,147,321
Net cash provided by noncapital financing activities	896,087	2,147,321
Cash flows from capital and related financing activities:		
Payments for additions to capital assets	(573,644)	(290,598)
Payments for additions of film rights	(39,780)	(46,895)
Issuance of note payable (HPM Chiller)	-	327,117
Payments on note payable (HPM Chiller)	(105,697)	(46,343)
Payments on due to the UH System (KUHA note)	-	(200,000)
Payments on note payable (KUHT server)	(12,542)	(75,248)
Net cash used in capital and related financing activities	(731,663)	(331,967)
Change in cash and cash equivalents	-	-
Cash and cash equivalents, beginning of year	-	-
Cash and cash equivalents, end of year	\$ 0	0

See accompanying notes to basic financial statements.

**HOUSTON PUBLIC MEDIA**  
(A Division of the University of Houston System)

Statements of Cash Flows (Continued)

Years Ended August 31, 2017 and 2016

	<b>2017</b>	<b>2016</b>
	<b>Primary institution</b>	<b>Primary institution</b>
Reconciliation of operating loss to net cash used in operating activities:		
Operating loss	\$ (407,330)	(3,403,738)
Adjustments to reconcile change in net position to net cash used in operating activities:		
Depreciation expense	884,047	923,131
Amortization of film rights	52,597	87,280
Decrease in accounts receivable	253,638	637,205
(Increase) decrease in pledge receivable	18,348	(1,060)
Increase in grant receivable	(784,115)	-
Decrease in prepaid expenses	12,008	43,926
Decrease in accounts payable	(1,482)	(151,149)
Increase (decrease) in accrued payroll	(61,267)	38,569
Decrease in unearned revenue	(150,777)	(74,826)
Increase (decrease) in employees' compensable leave	(48,932)	22,495
Deferred outflows of resources – pensions	(128,449)	(109,580)
Deferred inflows of resources – pensions	(103,612)	(361,778)
Net pension liability	300,902	534,171
Total adjustments	242,906	1,588,384
Net cash used in operating activities	\$ (164,424)	(1,815,354)
Supplemental noncash investing and financing activities:		
Disposal of capital assets in KUHA sale	\$ -	9,586,611
Settlement of note payable to the UH System through KUHA sale	\$ -	8,926,623

See accompanying notes to basic financial statements.

**HOUSTON PUBLIC MEDIA**  
(A Division of the University of Houston System)

Notes to Basic Financial Statements

August 31, 2017 and 2016

**(1) Entity**

Houston Public Media (the Stations or Primary Institution), of the University of Houston (UH) System (the UH System), which consists of a noncommercial, listener-supported radio station (KUHF and, prior to July 15, 2016, KUHA) and a viewer-supported television station (KUHT), serves as Houston's National Public Radio (NPR) affiliate and classical music source and Houston's Public Broadcasting Services (PBS) affiliate. KUHF signed on the air in 1950 as a public radio station. KUHT signed on the air on May 25, 1953, as the nation's first noncommercial educational television station. KUHF provides news and cultural programming at both local and national levels. On May 6, 2011, KUHF purchased KTRU's license for frequency 91.7 from Rice University. KUHA 91.7 Classical went on the air May 16, 2012, providing a 24-hour classical music service to the Greater Houston area. At the same time, KUHF 88.7 changed their programming format to a 24-hour news and information station. During the year ended August 31, 2016, the UH System sold the broadcast license for KUHA, and that programming changed to exclusively internet-based and high-definition broadcast. KUHT provides the building blocks for the Stations' schedule with locally produced and acquired programs selected primarily for their appeal to a national audience; programs chosen on the basis of quality and audience interests are presented uninterrupted by commercial announcements. The Stations, licensed to the Board of Regents of the UH System, are located at the UH System's Central campus and are a division of the UH System. As a division of the UH System, the Stations are exempt from federal income taxes other than taxes on unrelated business income, if any. The Stations currently operate 24 hours a day. The Stations are located in the fourth largest metropolitan area of the United States. These financial statements present financial information that is attributable to the Stations and do not purport to, and do not, present fairly the financial position of the UH System.

The Stations are dedicated to education and outreach through a wide variety of activities, such as community advancement, and expanding and strengthening partnerships and collaborations with key arts organizations in Houston. In pursuing all the dissimilar goals, the Stations have consistently used cutting edge technology to extend the value of its services.

KUHT is a full-service television station licensed to UH. The studio facilities are on the UH campus in the LeRoy and Lucile Melcher Center for Public Broadcasting. The transmitter facilities are located in Missouri City, Texas. The digital video services offered today include one high-definition program service and two standard-definition services. KUHT was the first Houston television station to offer closed captioning for hearing impaired viewers and descriptive video for visually impaired persons. It was the first in Houston to offer stereo broadcasts and the first to make use of the Second Audio Program capabilities to provide additional services to the Greater Houston area, including access to the Houston Taping for the Blind radio service. The broadcast signal reaches 33 counties in southeast Texas and is carried on numerous cable television systems, as well as both the Dish Network and DirecTV satellite services.

KUHF's new media technologies are rapidly developing with the changing landscape of on-demand media around the world. Current services include all news and all music internet streams; podcasts; on-demand shows; user interactive event calendars; RSS feeds; and iPhone, Blackberry and iPad applications.

**HOUSTON PUBLIC MEDIA**  
(A Division of the University of Houston System)

Notes to Basic Financial Statements

August 31, 2017 and 2016

Houston Public Media Foundation (HPMF), formerly known as the Association for Community Broadcasting (ACB) and as the Association for Community Television (ACT), was organized in 1969, as a Texas nonprofit corporation, primarily for the purpose of providing financial and other support to KUHT, Channel 8, in Houston, Texas. On January 25, 2005, the Board of Regents of the UH System and ACT agreed that the same services provided to KUHT would also be provided to KUHF and thus adopted the ACB name. On January 30, 2014, ACB changed its name to HPMF to be more aligned with the station's new branding under the newly formed Houston Public Media division of UH.

The UH System and HPMF, as part of an ongoing agreement, have stipulated that all grants for the Stations' programming and other activities will be deposited with the UH System's Office of Sponsored Programs or, at the discretion of the general manager of the Stations, deposited in accounts maintained by HPMF and immediately and exclusively available to the Stations.

HPMF is directed by a Board of Directors, who are elected by other HPMF Directors, and is managed on a daily basis by a combination of Board Officers and the Stations' employees. There are no separately issued financial statements of HPMF.

HPMF is a legally separate and tax-exempt entity meeting all of the following criteria to be discretely presented as a component unit. These criteria are as follows.

- The economic resources received or held by the separate organization are entirely or almost entirely for the direct benefit of the primary government, its component units or its constituents.
- The primary government, or its component units, is entitled to, or has the ability to otherwise access, a majority of the economic resources received or held by the separate organization.
- The economic resources received or held by an individual organization that the specific primary government, or its component units, is entitled to, or has the ability to otherwise access, are significant to that primary government.

The financial statements of the Primary Institution and its component unit, HPMF, are presented using the same categories in order to provide consistency. HPMF is not a governmental entity, and as such, current year data has been made to conform to reporting under GASB.

**(2) Summary of Significant Accounting Policies**

***a. Basis of Accounting***

The financial accounting records of the Stations and HPMF are maintained by the UH System's Office of the Associate Vice Chancellor for Finance in accordance with accounting principles generally accepted in the United States of America for colleges and universities.

The financial statements for both the Stations and HPMF are presented using the economic resources measurement focus and the accrual basis of accounting whereby revenues are recorded when earned and all expenses are recorded when they have been incurred.

**HOUSTON PUBLIC MEDIA**  
(A Division of the University of Houston System)

Notes to Basic Financial Statements

August 31, 2017 and 2016

**b. Reporting Guidelines**

The Stations are reported as a single purpose business-type activity entity. In addition, the Stations' financial statements have been prepared in accordance with the Corporation for Public Broadcasting's (CPB) *Application Principles of Accounting and Financial Reporting to Public Telecommunications Entities*.

**c. Deferred Outflows/Inflows of Resources**

Transactions not meeting the definition of an asset or liability that result in the consumption or acquisition of net position in one period that are applicable to future periods are reported as deferred outflows of resources and deferred inflows of resources.

**d. Net Position**

*Net investment in capital assets* – represents the Stations' or HPMF's original acquisition value of capital assets, net of accumulated depreciation and outstanding debt obligations related to those capital assets. To the extent debt has been incurred but not yet expended for capital assets, such amounts are not included as a component of net investment in capital assets.

*Nonexpendable restricted net position* – represents endowment principal which cannot be used for operational purposes and which is restricted in perpetuity.

*Expendable restricted net position* – represents income received from an endowment or gifts to the Innovation and Sustainability Fund, which are available for purposes restricted by the donors and can include gifts restricted by the donor for a specific purpose.

*Unrestricted net position* – represents resources that are available for the support of the Stations' or HPMF's operations.

When the Stations or HPMF incur an expense for which both restricted and unrestricted resources may be used, it is the policy of management to use restricted resources first then unrestricted resources.

**e. Revenues**

Operating revenues include sources that are primarily used to provide services to the Stations' audience or to further HPMF's exempt purpose. Substantially all revenues are considered operating with the exception of net change in fair value of endowments, insurance recoveries and other investment income.

Unrestricted contributions and gifts do not have binding agreements and are recorded as revenues when received. Unrestricted grants are recorded as revenues at the time the grant awards are received and when eligibility requirements have been met. Restricted support and revenues are recognized upon incurring the appropriate expenses or meeting the eligibility requirements.

**HOUSTON PUBLIC MEDIA**  
(A Division of the University of Houston System)

Notes to Basic Financial Statements

August 31, 2017 and 2016

***f. Accounts Receivable***

Accounts receivable are stated at the amount billed to customers or grantors. Accounts receivable are ordinarily due 30 days after the issuance of an invoice. An allowance for delinquent receivables is provided, which is based upon a review of outstanding receivables, historical collections and existing economic conditions.

***g. Pledges Receivable***

Unconditional promises to give (pledges) that are measurable are recorded after being discounted to the anticipated net present value of the future cash flows. The Stations and HPMF provide an allowance for estimated uncollectible pledges, which is based upon a review of outstanding pledges receivable, historical collections and existing economic conditions.

***h. Cash and Cash Equivalents***

Cash and cash equivalents are considered to be claims on cash, cash on hand and demand deposits with original maturities of three months or less from the date of acquisition.

Cash and cash equivalents for the Stations represent the Stations' prorated share of commingled cash and cash equivalents held and invested by the UH System acting as the Stations' fiscal agent to optimize the rate of return. All of the funds included in cash and cash equivalents are insured or registered or are securities held by the UH System or its agent in the UH System's name.

Immediately upon formal written notification of an approved appropriation or grant, the UH System permits the Stations to draw cash against the full appropriation or grant (in compliance with the terms of the appropriation or grant) regardless of whether the UH System has received the related funds.

For current unrestricted and restricted accounts, the UH System allocated a percentage of the interest income earned to the Stations at a fixed rate based on its monthly average cash balance.

***i. Capital Assets***

Capital assets represent buildings and equipment acquired primarily for the operation of the Stations. Title of the buildings and equipment rests with the State of Texas (the State) in the name of the UH System and, therefore, such assets can be transferred to or from the Stations at the discretion of the UH System. The threshold for capitalization of assets is \$5,000 and over. Capital assets are stated at cost at the date of acquisition or estimated acquisition value at the date of donation. Expenditures for repairs and maintenance are charged to current operating expenses as incurred.

**HOUSTON PUBLIC MEDIA**  
(A Division of the University of Houston System)

Notes to Basic Financial Statements

August 31, 2017 and 2016

Depreciation is recorded on a straight-line basis over the estimated useful lives of the assets as follows:

Buildings and building improvements	22–30 years
Furniture and equipment	5–10 years
Other assets	5 years
Land	Not depreciable
Indefinite lived intangible assets	Not depreciable

Useful lives are established by a uniform classification system maintained by the State and are measured from the date of acquisition.

***j. Film Rights***

Film rights purchased are amortized over the respective contract periods on a straight-line basis or over the period of expected usage. Estimated useful lives of such rights range from one to five years.

***k. In-kind Contributions***

In-kind contributions included in revenues and expenses in the accompanying statements of revenues, expenses and changes in net position consist of general support from the UH System, which is further described in Note 11.

The fair value of merchandise contributed by third parties in connection with the Stations' fundraising activities is not included in the accompanying financial statements. Donated in-kind contributions of services and other intangibles, as well as promotional merchandise and donated personal services, are also not included in the accompanying financial statements.

***l. Unearned Revenues***

Grant and program underwriting revenues received relating to the period after fiscal year-end are reported as unearned revenues.

***m. Advertising***

Advertising costs are charged to operations when incurred.

***n. Use of Estimates***

The preparation of financial statements in conformity with accounting principles generally accepted in the United States of America requires management to make estimates and assumptions that affect certain reported amounts and disclosures. Accordingly, actual results could differ from those estimates.



**HOUSTON PUBLIC MEDIA**  
(A Division of the University of Houston System)

Notes to Basic Financial Statements

August 31, 2017 and 2016

***o. Employees' Compensable Leave***

The Stations' employees are classified as State employees and as such are entitled to be paid for all unused vacation time accrued in the event of the employee's resignation, dismissal or separation from State employment provided the employee has had continuous employment with the State for six months. An expense and liability are recorded as the benefits accrue to employees.

Full-time State employees earn annual leave from eight to 21 hours per month depending on the respective employees' years of State employment. The State's policy is that an employee may carry accrued leave forward from one fiscal year to another fiscal year with a maximum number of hours up to 532 for those employees with 35 or more years of State service. Accrued leave in excess of the normal maximum is converted to sick leave at the conclusion of the fiscal year. Employees with at least six months of State service who terminate their employment are entitled to payment for all accumulated annual leave up to the maximum allowed.

***p. Pensions***

For purposes of measuring the net pension liability, deferred outflows of resources and deferred inflows of resources related to pensions, and pension expense, information about the fiduciary net position of the Teacher Retirement System of Texas (TRS) plan and additions to/deductions from TRS's fiduciary net position have been determined on the same basis as they are reported by TRS. For this purpose, benefit payments (including refunds of employee contributions) are recognized when due and payable in accordance with the benefit terms. Investments are reported at fair value.

***q. Reclassifications***

Certain reclassifications have been made to the 2016 financial statements to conform to the 2017 financial statement presentation. These reclassifications had no effect on the change in net position.

**(3) Endowment Funds**

***a. Primary Institution***

Gifts to the UH System are placed in the UH System's endowment fund, which is a pooled investment of individual endowments benefiting the entire UH System.

The Endowment Fund allocated income (net of management fees) to the individual endowments based on an income allocation policy that establishes the income payment rate as a percentage on the average of the outstanding endowment's fair value in the previous three fiscal years. That percentage was 4% in fiscal years 2017 and 2016. If an endowment were in existence less than three years, the average was based on the number of years in existence.

The deposits and investments of the Stations and HPMF are exposed to certain inherent risks, such as credit risk, concentration of credit risk, interest rate risk and foreign currency risk. The deposits and investments with the Endowment Fund are exposed to risks that have the potential to result in losses.

**HOUSTON PUBLIC MEDIA**  
(A Division of the University of Houston System)

Notes to Basic Financial Statements

August 31, 2017 and 2016

Those risks and their definitions are:

- Credit risk – the risk an insurer or counterparty to an investment will not fulfill its obligation
- Custodial risk – the risk that in the case of default by the counterparty a government will be unable to recover its deposit/investment or collateralizing securities in the possession of an outside party
- Concentration risk – the risk of loss attributable to the size of a government's investment in a single issuer
- Interest rate risk – the risk that changes in interest rates will adversely affect the fair value of investments
- Foreign currency risk – the risk that changes in exchange rates will adversely affect the fair value of a deposit or investment

During fiscal years 2017 and 2016, the Endowment Management Committee of the UH System Board of Regents continued to review existing objectives, risks, asset allocation and manager structure within the endowment portfolio. The Endowment Fund Statement of Investment Objectives and Policies, among other things, establishes financial objectives for the endowment and an asset allocation with targets and ranges and categorizes each asset class as either a risk reducer or a driver of return. Further information regarding the investment balances and risks with the Endowment Fund, which does not have a credit rating, may be obtained from the UH System Office of the Treasurer.

The following summarizes the Stations' activity for the years ended August 31, 2017 and 2016:

Balance, September 1, 2015	\$	1,458,058
FY16 distributions		(54,336)
FY16 realized/unrealized gain		<u>36,073</u>
Balance, August 31, 2016		1,439,795
FY17 distributions		(56,066)
FY17 realized/unrealized gain		<u>161,864</u>
Balance, August 31, 2017	\$	<u><u>1,545,593</u></u>

The assets of the Stations' endowments totaled \$1,545,593 and \$1,439,795 at August 31, 2017 and 2016, respectively. Unrealized gains and losses for each year are recorded in the accompanying statements of revenues, expenses and changes in net position.

**HOUSTON PUBLIC MEDIA**  
(A Division of the University of Houston System)

Notes to Basic Financial Statements

August 31, 2017 and 2016

***b. Component Unit (HPMF)***

The gifts received by HPMF to create endowed accounts are invested in the HPMF Endowment Fund Investment Pool (the Investment Pool), which is operated and overseen by the HPMF Endowment Fund (the Endowment) and Gift Committee. The Investment Pool combines the assets of all endowment fund accounts and is allocated to external investment managers. The objectives of the Investment Pool are to protect the real value of the Endowment, while maximizing the amount distributed annually for endowed spending as further described in the HPMF Endowment Fund Investment Policy. Thus, in any given year, any excess over the amount distributed from the Endowment will be reinvested to protect the capital against erosion by inflation.

The Endowment's spending policy is consistent with its investment objective of achieving long-term real growth in its assets. In order to achieve such long-term real growth, the Endowment should have as a goal that its total distributions and expenses not exceed the Endowment's total inflation-adjusted return on investments. Consistent with the Endowment's long-term investment objectives, the Board of Directors established the spending policy, which generally permits total distributions and expenses (including but not limited to investment management fees) not in excess of an amount equal to 4% of the average net asset value of the Endowment over the prior three years (or the life of the Endowment if shorter than three years). The Board of Directors may authorize distributions in excess of the 4% when the Stations have the need to fund one-time capital expenditures.

The Endowment has a related operating account to which annual income distributed from the endowment funds is deposited and to which expenditures, in accordance with the donor's wishes, may be charged. In the event that there is a balance in the Endowment operating account at fiscal year-end, it will automatically be transferred back to the endowment funds on a prorated basis (according to the income distributed). This procedure is called "Endowment Capitalization." It is in the Endowment's best interests that surplus funds are capitalized, since they will yield new units and thus generate additional income in future years.

The Investment Pool is invested with an external investment manager in commingled funds who invests, for example, in marketable securities, fixed income, alternative investments, real estate and cash equivalents. The Investment Pool reported a fair value of \$1,189,840 and \$1,200,370 as of August 31, 2017 and 2016, respectively, which has been estimated by fund managers in the absence of readily available market values and is not publicly traded. These investments are domestic and international in nature and risks associated with these investments include liquidity risk, market risk, event risk, foreign exchange risk, interest rate risk and investment manager risk.

During the year ended August 31, 2015, the funds were transferred from the Greater Houston Community Foundation to the University of Houston Foundation (U of H Foundation), which does not have a credit rating. Further information regarding the investment balances and risks with the U of H Foundation may be obtained from HPMF business offices by calling 713.748.8888.

**HOUSTON PUBLIC MEDIA**  
(A Division of the University of Houston System)

Notes to Basic Financial Statements

August 31, 2017 and 2016

The following summarizes HPMF's activity for the years ended August 31, 2017 and 2016:

Balance, September 1, 2015	\$	1,183,737
FY16 contributions		1,701
FY16 unrealized gain		14,932
		1,200,370
Balance, August 31, 2016		1,200,370
FY17 distributions		(91,832)
FY17 unrealized gain		81,302
		1,189,840
Balance, August 31, 2017	\$	1,189,840

**(4) Accounts Receivable**

Accounts receivable as of August 31, 2017, comprised the following:

	<b>Primary institution</b>	<b>Component unit (HPMF)</b>
Accounts receivable	\$ 343,011	858,846
Allowance for doubtful accounts	-	-
Total	\$ 343,011	858,846

Accounts receivable as of August 31, 2016, comprised the following:

	<b>Primary institution</b>	<b>Component unit (HPMF)</b>
Accounts receivable	\$ 615,705	605,007
Allowance for doubtful accounts	(19,056)	-
Total	\$ 596,649	605,007

Accounts receivable for the Stations and HPMF consist primarily of production grants and underwriting support.

**HOUSTON PUBLIC MEDIA**  
(A Division of the University of Houston System)

Notes to Basic Financial Statements

August 31, 2017 and 2016

**(5) Pledge Receivable**

As of August 31, 2016, HPMF had a pledge receivable consisting of an unconditional promise to give in connection with a board room naming program. The majority of the pledge was collected during the fiscal year ended August 31, 2017, and the balance was written off.

	<b>2017</b>	<b>2016</b>
Receivable within one year	\$ -	5,000
Receivable in two to five years	-	135,000
Less discount	-	(1,652)
	\$ 0	138,348

As of August 31, 2017 and 2016, there was no allowance for estimated uncollectible pledges. The pledge receivable from HPMF and pledge payable to the Primary Institution as of August 31, 2016, consisted of the same amounts presented above. As of August 31, 2017, the pledge receivable from HPMF and pledge payable to the Primary Institution consisted of \$120,000 collected on the above pledge which had not yet been remitted to the Primary Institution.

**(6) Capital Assets**

Capital asset activities for the year ended August 31, 2017, were as follows for the Stations:

	<b>2016</b>	<b>Additions</b>	<b>Dispositions</b>	<b>2017</b>
Capital assets:				
Buildings and building improvements	\$ 12,706,461	-	-	12,706,461
Furniture and equipment	8,296,808	573,644	288,508	8,581,944
Vehicles	53,295	-	-	53,295
Intangible and other assets	75,000	-	-	75,000
Total capital assets	21,131,564	573,644	288,508	21,416,700
Less accumulated depreciation	15,628,555	884,047	288,508	16,224,094
Net capital assets	\$ 5,503,009	(310,403)	0	5,192,606

**HOUSTON PUBLIC MEDIA**  
(A Division of the University of Houston System)

Notes to Basic Financial Statements

August 31, 2017 and 2016

Capital asset activities for the year ended August 31, 2017, were as follows for HPMF:

	<b>2016</b>	<b>Additions</b>	<b>Dispositions</b>	<b>2017</b>
Capital assets:				
Land	\$ 14,100	-	-	14,100
Program costs	652,089	-	-	652,089
Furniture and equipment	424,249	-	-	424,249
Other assets	4,050	-	-	4,050
Accounting software – FM	55,105	-	-	55,105
Accounting software – TV	55,105	-	-	55,105
Total capital assets	1,204,698	-	-	1,204,698
Less accumulated depreciation	1,190,598	-	-	1,190,598
Net capital assets	\$ 14,100	0	0	14,100

Capital asset activities for the year ended August 31, 2016, were as follows for the Stations:

	<b>2015</b>	<b>Additions</b>	<b>Dispositions</b>	<b>2016</b>
Capital assets:				
Buildings and building improvements	\$ 12,415,863	290,598	-	12,706,461
Furniture and equipment	8,646,419	-	349,611	8,296,808
Vehicles	53,295	-	-	53,295
Land	402,044	-	402,044	-
Intangible and other assets	9,221,225	-	9,146,225	75,000
Total capital assets	30,738,846	290,598	9,897,880	21,131,564
Less accumulated depreciation	14,997,665	923,131	292,241	15,628,555
Net capital assets	\$ 15,741,181	(632,533)	9,605,639	5,503,009

**HOUSTON PUBLIC MEDIA**  
(A Division of the University of Houston System)

Notes to Basic Financial Statements

August 31, 2017 and 2016

Capital asset activities for the year ended August 31, 2016, were as follows for HPMF:

	<b>2015</b>	<b>Additions</b>	<b>Dispositions</b>	<b>2016</b>
Capital assets:				
Land	\$ 14,100	-	-	14,100
Program costs	652,089	-	-	652,089
Furniture and equipment	424,249	-	-	424,249
Other assets	4,050	-	-	4,050
Accounting software – FM	55,105	-	-	55,105
Accounting software – TV	55,105	-	-	55,105
Total capital assets	1,204,698	-	-	1,204,698
Less accumulated depreciation	1,190,598	-	-	1,190,598
Net capital assets	\$ 14,100	0	0	14,100

**(7) Investments Restricted for Endowment and Programs**

The Stations' investments restricted for endowment are placed in the UH System's endowment fund (the Endowment Fund), which is a pooled investment of individual endowments. HPMF has investments restricted for endowment and investments restricted for programs in an external investment pool held with the U of H Foundation. None of the external investment pools are publicly registered and the investments may only be redeemed by action of the Board of Directors. The Endowment Fund attempts to preserve the real (inflation adjusted) purchasing power of endowment assets, when measured over rolling periods of at least five years, and to outperform the capital markets in which the endowment assets are invested, measured over rolling periods of three to five years. The U of H Foundation relies on a total return strategy in which investment returns are achieved through both capital appreciation and current yield. The U of H Foundation targets a diversified asset allocation that places a greater emphasis on equity-based investments to achieve its long-term return objectives within prudent risk constraints.

The Stations' and HPMF's investments are carried at fair value. Fair value is the price that would be received to sell an asset or paid to transfer a liability in an orderly transaction between market participants at the measurement date.

In accordance with GASB No. 72, Fair Value Measurement and Application, for investments in pooled funds, the fair value is determined as the number of units or shares held in the fund multiplied by the price per unit or shares as publicly quoted. Investments restricted for endowment in which a public market does not exist are based on the Stations' and HPMF's ownership interest in the net asset value (NAV) of each fund as reported by the fund managers. Investments are reported at NAV and are not categorized according to fair value.

The Stations had the following recurring fair value measurements as of August 31, 2017 and 2016:

- Pooled investments of \$1,545,593 and \$1,439,795, respectively, are valued at fair value per share of the pool's underlying portfolio.

**HOUSTON PUBLIC MEDIA**  
(A Division of the University of Houston System)

Notes to Basic Financial Statements

August 31, 2017 and 2016

HPMF had the following recurring fair value measurements as of August 31, 2017 and 2016:

- Pooled investments of \$1,890,470 and \$1,200,370, respectively, are valued at fair value per share of the pool's underlying portfolio.

**(8) Film Rights**

KUHT pays for the right to use certain films in its broadcasting activities. The costs of those rights are amortized over the purchased periods. Changes in the costs of film rights for the years ended August 31, 2017 and 2016, were as follows.

Balance, September 1, 2015		\$	95,115
FY16 additions			46,895
FY16 amortization			(87,280)
			54,730
Balance, August 31, 2016			54,730
FY17 additions			39,780
FY17 amortization			(52,597)
			41,913
Balance, August 31, 2017		\$	41,913

**(9) Due to the UH System**

Since the Stations maintain all of their cash balances with the UH System's treasury department, the UH System permits the Stations to overdraw their claims on cash account from time to time. The amount disclosed in the "Due to the UH System" account represents the amount by which the Stations have overdrawn their claim on cash account with the UH System as of August 31, 2017 and 2016.

**(10) Unrestricted Net Deficit**

The Stations have been experiencing a net excess of expenses over revenues, resulting in an increasing net deficit of unrestricted net position. The net deficit of unrestricted net position at August 31, 2017 and 2016, was \$12,865,027 and \$12,649,861, respectively. The deficit resulted mainly due to operating expenses exceeding operating revenues over several years.

**(11) General Support from the UH System**

General support from the UH System includes building and related occupancy costs donated by the UH System and is recorded in revenues and expenses. The occupancy costs are determined based on the net book value of the building and tower, as well as the square footage of the building and tower utilized by the Stations. Occupancy cost was \$325,429 in each of the fiscal years 2017 and 2016. The Stations also receive from the UH System the plant facility operations cost (lawn maintenance, carpeting, painting, etc.) which was \$0 and \$154,732 in fiscal years 2017 and 2016, respectively. The UH System also provides indirect administrative support and maintenance support to the Stations, which are recorded in revenues and expenses based on the UH System's allocation methods. Indirect administrative support amounted to \$4,881,508 and \$6,129,696 in fiscal years 2017 and 2016, respectively.



**HOUSTON PUBLIC MEDIA**  
(A Division of the University of Houston System)

Notes to Basic Financial Statements

August 31, 2017 and 2016

**(12) Corporation for Public Broadcasting Grants**

CPB is a private, nonprofit grant-making organization responsible for funding more than 1,000 television and radio stations. CPB distributes annual Community Service Grants (CSG) to qualifying public broadcasting entities. CSGs are used to augment the financial resources of public broadcasting entities and thereby to enhance the quality of programming and expand the scope of public broadcasting services. Each CSG may be expended over one or two federal fiscal years as described in the *Communications Act*, 47 United States Code Annotated, Section 396(k)(7). In any event, each grant must be expended within two years of the initial grant authorization.

According to the *Communications Act*, CSG funds may be used at the discretion of recipients for purposes relating primarily to production and acquisition of programming. Also, the grants may be used to sustain activities begun with CSGs awarded in prior years.

Certain general provisions must be satisfied in connection with application for and use of the grants to maintain eligibility and meet compliance requirements. These general provisions pertain to the use of grant funds recordkeeping, audits, financial reporting, mailing lists and licensee status with the Federal Communications Commission.

**(13) Pension Plans and Optional Retirement Program**

The State has joint contributory retirement plans for substantially all of its employees. The Stations participate in the plans administered by the Teacher Retirement System of Texas (the Retirement System). Future pension costs are the liabilities of the Retirement System. The Retirement System does not account for each State agency separately. Annual financial reports prepared by the Retirement System include audited financial statements and actuarial assumptions and conclusions.

The State has also established an Optional Retirement Program (ORP) for institutions of higher education. Participation in the ORP is available to certain eligible employees and is in lieu of participation in the Teacher Retirement System (TRS).

The State has three retirement systems in its financial reporting entity – Employees Retirement System (ERS), TRS and Texas Emergency Services Retirement System (TESRS). These three retirement systems administer the following six defined benefit pension plans:

- ERS – the Employees Retirement System of Texas Plan (ERS), the Law Enforcement and Custodial Officer Supplemental Retirement Plan (LECOS), the Judicial Retirement System of Texas Plan One (JRS1) and Judicial Retirement System of Texas Plan Two (JRS2)
- TRS – the Teacher Retirement System of Texas (TRS) plan
- TESRS – the Texas Emergency Services Retirement System (TESRS) plan

**HOUSTON PUBLIC MEDIA**  
(A Division of the University of Houston System)

Notes to Basic Financial Statements

August 31, 2017 and 2016

The ERS, LECOS, JRS2, TRS and TESRS plans are administered through trust; the JRS1 plan is on a pay-as-you-go basis. The Stations only participate in the TRS plan and the ORP.

**TRS Plan**

The Retirement System is the administrator of the TRS plan, a cost-sharing multiple-employer defined benefit pension plan, with a special funding situation for certain employers. No on-behalf payments were made by the State for the Stations.

The employers of the TRS plan include the State, TRS, the State's public schools, education service centers, charter schools, and community and junior colleges. All employees of public, state-supported education institutions in Texas who are employed for one-half or more of the standard work load and not exempted from membership under Texas Government Code, Title 8, Section 822.002, are covered by the system. Employees of TRS and State colleges, universities and medical schools are members of the TRS plan.

The TRS plan provides retirement, disability annuities, and death and survivor benefits. The benefit and contribution provisions of the TRS plan are authorized by State law and may be amended by the Legislature. The pension benefit formulas are based on members' average annual compensation and years of service credit. The standard annuity is 2.3% of the average of the five highest annual salaries multiplied by years of service credit. For grandfathered members who were hired on or before August 31, 2005, and meet certain criteria, the standard annuity is based on the average of the three highest annual salaries. The plan does not provide automatic cost of living adjustments (COLA).

The audited Comprehensive Annual Financial Report (CAFR) for TRS may be obtained from:

Teacher Retirement System of Texas  
1000 Red River Street  
Austin, Texas 78701-2698  
<http://www.trs.state.tx.us/about/documents/cafr.pdf#CAFR>

For the years ended August 31, 2017 and 2016, the Stations' contributions to the TRS plan were \$279,606 and \$263,636, respectively. The contribution rates for the employers and the members are presented in the table below:

<b>Required Contribution Rates</b>	<b>Year Ended August 31, 2017</b>	<b>Year Ended August 31, 2016</b>
Employer (the Stations)	6.80%	6.80%
Members	7.20%	7.20%

**HOUSTON PUBLIC MEDIA**  
(A Division of the University of Houston System)

Notes to Basic Financial Statements

August 31, 2017 and 2016

The total pension liability is determined by annual actuarial valuations. The table below presents the actuarial methods and assumptions used to measure the total pension liability as of the August 31, 2016 and 2015, measurement dates.

	<u>2016–2015</u>	<u>2014</u>
Actuarial Valuation Date	August 31, 2016 and 2015	August 31, 2014
Actuarial Cost Method	Individual Entry Age Normal	Individual Entry Age Normal
Amortization Method	Level Percent, Open	Level Percent, Open
Actuarial Assumptions:		
Discount Rate	8.00%	8.00%
Investment Rate of Return	8.00%	8.00%
Inflation	2.50%	3.00%
Salary Increase, Including Inflation	3.50% to 9.50%	4.25% to 7.25%
Mortality:		
Active	90% of the RP-2014 Employee Mortality Tables for males and females	1994 Group Annuity Mortality Table, set back six years for males and females
Postretirement	2015 TRS of Texas Healthy Pensioner Mortality Tables	Client-specific tables multiplied by 80%
Ad Hoc Postemployment Benefit Changes	None	None

The actuarial assumptions used in the 2016 and 2015 actuarial valuations were primarily based on the results of an actuarial experience study for the four-year period ended August 31, 2014, and adopted in September 2015.

There have been no changes to the benefit provisions of the plan since the prior measurement date.

The discount rate of 8% was applied to measure the total pension liability. There has been no change in the discount rate since the prior measurement period. The projected cash flows into and out of the pension plan assumed that members, employers and the nonemployer contributing entity make their contributions at the statutorily required rates. Under this assumption, the pension plan's fiduciary net position is projected to be sufficient to make all future pension benefit payments of current plan members. Therefore, the 8% long-term expected rate of return on pension plan investments was used as the discount rate without incorporating the municipal bond rate.

The long-term expected rate of return on plan investments was developed using a building-block method with assumptions, including asset class of investment portfolio, target allocation, real rate of return on investments and inflation factor. Under this method, best estimate ranges of expected future real rates of return (net of investment expense and inflation) are developed for each major asset class. These ranges are combined to produce the long-term expected rate of return by weighing the expected future real rates of return by the target asset allocation percentage and by adding expected inflation.

**HOUSTON PUBLIC MEDIA**  
(A Division of the University of Houston System)

Notes to Basic Financial Statements

August 31, 2017 and 2016

The target allocation and best estimates of geometric real rates of return for each major asset class for the plan's investment portfolio for the measurement period ended August 31, 2016, are presented below:

Asset Class	Target Allocation	Long-term Expected Geometric Real Rate of Return
<i>Global Equity</i>		
U.S. Treasury	18%	4.6%
Non-U.S. Developed	13%	5.1%
Emerging Markets	9%	5.9%
Directional Hedge Funds	4%	3.2%
Private Equity	13%	7.0%
<i>Stable Value</i>		
U.S. Treasury	11%	0.7%
Absolute Return	0%	1.8%
Stable Value Hedge Funds	4%	3.0%
Cash	1%	-0.2%
<i>Real Return</i>		
Global Inflation Linked Bonds	3%	0.9%
Real Assets	16%	5.1%
Energy and Natural Resources	3%	6.6%
Commodities	0%	1.2%
<i>Risk Parity</i>		
Risk Parity	5%	6.7%
Total	100%	

Sensitivity analysis was performed on the impact of changes in the discount rate on the proportionate share of the Stations' net pension liability as of August 31, 2017. The result of the analysis is presented in the table below:

<b>Sensitivity of the Stations' Proportionate Share of the Net Pension Liability to Changes in the Discount Rate</b>		
1% Decrease (7%)	Current Discount Rate (8%)	1% Increase (9%)
\$ 5,694,692	\$ 3,788,573	\$ 1,970,288

The pension plan's fiduciary net position is determined using the economic resources measurement focus and the accrual basis of accounting, which is the same basis used by TRS. Benefits and refunds of contributions are recognized when due and payable in accordance with the terms of the plan. Investments are reported at fair value. The framework for measuring fair value is based on a hierarchy that gives the highest priority to the use of observable inputs in an active market and lowest priority to the use of unobservable inputs. More detailed information on the plan's investment policy, assets and fiduciary net position may be obtained from TRS' fiscal 2016 and 2015 CAFRs.

**HOUSTON PUBLIC MEDIA**  
(A Division of the University of Houston System)

Notes to Basic Financial Statements

August 31, 2017 and 2016

At August 31, 2017 and 2016, the Stations reported a liability of \$3,788,573 and \$3,487,671, respectively, for their proportionate share of the collective net pension liability. The collective net pension liability at August 31, 2017, was measured as of August 31, 2016, and the total pension liability used to calculate the net pension liability was determined by an actuarial valuation as of that date. The collective net pension liability at August 31, 2016, was measured as of August 31, 2015, and the total pension liability used to calculate the net pension liability was determined by an actuarial valuation as of that date. The Stations' proportion at August 31, 2016, was 0.0097372%, which was a decrease from the 0.0098429% measured at the prior measurement date. The Stations' proportion of the collective net pension liability at August 31, 2017, was based on their contributions to the pension plan relative to the contributions of all the employers and the nonemployer-contributing entity to the plan for the period September 1, 2015 through August 31, 2016. The Stations' proportion of the collective net pension liability at August 31, 2016, was based on their contributions to the pension plan relative to the contributions of all the employers and the nonemployer-contributing entity to the plan for the period September 1, 2014 through August 31, 2015.

For the years ended August 31, 2017 and 2016, the Stations recognized pension expense of \$402,014 and \$308,026, respectively. At August 31, 2017, the Stations reported deferred outflows of resources and deferred inflows of resources related to pensions from the following sources:

	<b>Deferred outflows of resources</b>	<b>Deferred inflows of resources</b>
Difference between expected and actual experience	\$ 57,695	109,869
Changes of assumptions	112,146	101,992
Net difference between projected and actual investment return	311,576	-
Change in proportion and contribution difference	8,418	231,350
Contributions subsequent to the measurement date	279,606	-
Total	<u>\$ 769,441</u>	<u>443,211</u>

At August 31, 2016, the Stations reported deferred outflows of resources and deferred inflows of resources related to pensions from the following sources:

	<b>Deferred outflows of resources</b>	<b>Deferred inflows of resources</b>
Difference between expected and actual experience	\$ 38,118	133,714
Changes of assumptions	161,700	126,675
Net difference between projected and actual investment return	177,538	-
Change in proportion and contribution difference	-	286,433
Contributions subsequent to the measurement date	263,636	-
Total	<u>\$ 640,992</u>	<u>546,822</u>

**HOUSTON PUBLIC MEDIA**  
(A Division of the University of Houston System)

Notes to Basic Financial Statements

August 31, 2017 and 2016

The \$279,606 reported as deferred outflows of resources at August 31, 2017, resulting from contributions subsequent to the measurement date will be recognized as a reduction in net pension liability for the year ending August 31, 2018.

Other amounts reported as deferred outflows and inflows of resources related to pensions at August 31, 2017, will be recognized in pension expense in the following years:

Year Ending August 31:			
2018	\$		(16,857)
2019			(16,857)
2020			181,882
2021			(32,124)
2022			(74,697)
Thereafter			<u>5,277</u>
	\$		<u><u>46,624</u></u>

**Optional Retirement Program**

The State of Texas has also established an Optional Retirement Program (the ORP) for institutions of higher education. Participation in the ORP is in lieu of participation in the TRS. The ORP is an individualized defined contribution plan which provides for the purchase of annuity or mutual fund contracts.

For employees participating prior to September 1, 1995, the contributions to the ORP by the Stations and by each participant during fiscal year 2009 were 8.50% of the participants' annual compensation. For employees hired on September 1, 1995, or later, the percentages of the Stations' and participants' contributions were 6% of the participants' annual compensation. The percentages are established by the Texas Legislature and may fluctuate over time. Employee contribution rates for 2017 and 2016 are 6.65% for ORP participants. The State contribution rate for the ORP is 6.6% for 2017 and 2016. Contributions to the plan by the Stations and employee contributions were not material for 2017, 2016 and 2015. Since these are individual investment product contracts, the State has no additional or unfunded liability for the ORP. These contributions represent 100% of the required contribution.

**(14) Leases**

The Stations have entered into operating leases for various business purposes, including a tower antenna; fundraising software; utility van; fax and copy machine and KUHT server; web host connection in support of their operations; transmitting facility; and other equipment. The Stations have short- and long-term operating leases. During the years ended August 31, 2017 and 2016, lease expense was \$427,288 and \$313,378, respectively. There are no future minimum lease payments under noncancelable operating lease agreements as of August 31, 2017.

**HOUSTON PUBLIC MEDIA**  
(A Division of the University of Houston System)

Notes to Basic Financial Statements

August 31, 2017 and 2016

**(15) Transactions Between Primary Institution and Component Unit**

Cash expenditures made by HPMF on behalf of the Stations, such as expenditures associated primarily with fundraising for the Stations and production of the Stations' local programs, are recorded as revenues and expenses for the Stations. Such cash expenditures for the fiscal years ended August 31, 2017 and 2016, amounted to \$2,837,136 and \$2,273,439, respectively, and have been included in the contributions, special events and production service revenues and in operating expenses in the accompanying statements of revenues, expenses and changes in net position.

**(16) Income Taxes**

The UH System, of which the Stations are a division, is a university established as an agency of the State of Texas prior to 1969, and is qualified as a governmental entity not generally subject to federal income tax by reason of being a state or political subdivision thereof, or an integral part of a state or political subdivision thereof or an entity whose income is excluded from gross income for federal income tax purposes under Section 115 of the Internal Revenue Code of 1986 (IRC). However, as a state college or university, the UH System is subject to unrelated business income pursuant to IRC Section 511(a)(2)(B). No material unrelated business income tax was incurred for the years ended August 31, 2017 and 2016. HPMF, whose purpose is to raise money for the Stations, is exempt from income taxes under IRC Section 501(a) as an organization described in IRC Section 501(c)(3). No material unrelated business income tax was incurred by HPMF for the years ended August 31, 2017 and 2016. Accordingly, no provision for income taxes has been made in the accompanying financial statements.

**(17) Risk Management**

The Stations and HPMF are exposed to various risks of loss related to torts, injuries to employees and natural disasters. The UH System and HPMF carry commercial insurance to cover losses to which they may be exposed.

**(18) Long-term Liabilities**

The changes in long-term liabilities for the Stations for the year ended August 31, 2017, were as follows:

<b>Business-type Activities</b>	<b>Balances, August 31, 2016</b>	<b>Decreases</b>	<b>Balances, August 31, 2017</b>	<b>Amounts Due in One Year</b>
Notes payable:				
KUHT server	\$ 12,542	12,542	-	-
HPM Chiller replacement	280,774	105,697	175,077	82,179
Total	<u>\$ 293,316</u>	<u>118,239</u>	<u>175,077</u>	<u>82,179</u>

**HOUSTON PUBLIC MEDIA**  
(A Division of the University of Houston System)

Notes to Basic Financial Statements

August 31, 2017 and 2016

The changes in long-term liabilities for HPMF for the year ended August 31, 2017, were as follows:

<u>Business-type Activities</u>	<u>Balance, August 31, 2016</u>	<u>Decreases</u>	<u>Balance, August 31, 2017</u>	<u>Amounts Due in One Year</u>
Pledge payable to primary institution	\$ 138,348	18,348	120,000	120,000

The changes in long-term liabilities for the Stations for the year ended August 31, 2016, were as follows:

<u>Business-type Activities</u>	<u>Balances, August 31, 2015</u>	<u>Increases (Decreases)</u>	<u>Balances, August 31, 2016</u>	<u>Amounts Due in One Year</u>
Notes payable:				
KUHT server	\$ 87,790	(75,248)	12,542	12,542
KUHA purchase	9,126,623	(9,126,623)	-	-
HPM Chiller replacement	-	280,774	280,774	82,179
Total	\$ 9,214,413	(8,921,097)	293,316	94,721

The changes in long-term liabilities for HPMF for the year ended August 31, 2016, were as follows:

<u>Business-type Activities</u>	<u>Balance, August 31, 2015</u>	<u>Increases</u>	<u>Balance, August 31, 2016</u>	<u>Amounts Due in One Year</u>
Pledge payable to primary institution	\$ 137,288	1,060	138,348	5,000

The KUHT server was purchased by the UH System for the television station. The note is unsecured and bears interest at 1.75% payable monthly. The note was repaid during the year ended August 31, 2017.

The HPM Chiller was purchased by the UH System for the Stations. The note is unsecured and bears interest at 2.31% payable monthly. The Stations will be repaying the note following the schedule below:

	<u>HPM Chiller</u>
Year ending August 31:	
2018	\$ 82,179
2019	82,179
2020	10,719
	\$ 175,077



**HOUSTON PUBLIC MEDIA**  
(A Division of the University of Houston System)

Notes to Basic Financial Statements

August 31, 2017 and 2016

**(19) KUHA Station Sale**

During 2016, the Stations disposed of all capital assets and the broadcasting license related to KUHA. The UH System allowed the Stations to settle their long-term note payable, which was issued to purchase KUHA, through bond defeasance. Proceeds from the KUHA sale were deposited into an escrow fund and will be used to satisfy the outstanding principal due to the UH System of \$8,110,000. The transaction resulted in a loss on disposal of \$659,988.

**REQUIRED SUPPLEMENTARY INFORMATION**

**HOUSTON PUBLIC MEDIA**  
(A Division of the University of Houston System)

Schedule of Houston Public Media's Proportionate Share of the Net Pension Liability  
Teacher Retirement System of Texas Plan  
Year Ended August 31, 2017

	2017	2016	2015
Houston Public Media's Proportion of the Net Pension Liability	0.0097372%	0.0098429%	0.0111260%
Houston Public Media's Proportionate Share of the Net Pension Liability	\$ 3,788,573	3,487,671	2,972,528
Houston Public Media's Covered Payroll	\$ 3,967,210	3,784,423	4,078,174
Houston Public Media's Proportionate Share of the Net Pension Liability As a Percentage of its Covered Payroll	92.75%	92.16%	72.89%
Houston Public Media's Plan Fiduciary Net Position as a Percentage of the Total Pension Liability	78.00%	78.43%	83.25%

This schedule is presented to illustrate the requirements to show information for 10 years. However, until a full 10-year trend is compiled, the Stations will present information for the years for which the information is available. Information presented in the schedule has been determined as of the measurement date (one year before the most recent fiscal year-end) of the collective net pension liability in accordance with GASB 68.

Significant assumptions and other inputs used to measure the total pension liability in the 2016, 2015 and 2014 actuarial valuations were as follows:

	2016–2015	2014
Actuarial Valuation Date	August 31, 2016 and 2015	August 31, 2014
Actuarial Cost Method	Individual Entry Age Normal	Individual Entry Age Normal
Amortization Method	Level Percent, Open	Level Percent, Open
Actuarial Assumptions:		
Discount Rate	8.00%	8.00%
Investment Rate of Return	8.00%	8.00%
Inflation	2.50%	3.00%
Salary Increase, Including Inflation	3.50% to 9.50%	4.25% to 7.25%
Mortality:		
Active	90% of the RP-2014 Employee Mortality Tables for males and females	1994 Group Annuity Mortality Table, set back six years for males and females
Postretirement	2015 TRS of Texas Healthy Pensioner Mortality Tables	Client-specific tables multiplied by 80%
Ad Hoc Postemployment Benefit Changes	None	None

**HOUSTON PUBLIC MEDIA**  
(A Division of the University of Houston System)  
Schedule of Houston Public Media's Contributions  
Teacher Retirement System of Texas Plan  
Year Ended August 31, 2017

Contributions	2017	2016	2015	2014
Statutorily Required Contributions	\$ 279,606	\$ 263,636	\$ 300,321	\$ 282,076
Contributions in Relation to the Statutorily Required Contributions	\$ 279,606	\$ 263,636	\$ 300,321	\$ 282,076
Contribution Deficiency (Excess)	\$ 0	\$ 0	\$ 0	\$ 0
Houston Public Media's Covered-Employee Payroll	\$ 3,631,247	\$ 3,303,303	\$ 3,784,423	\$ 4,078,174
Contributions as a Percentage of Covered-Employee Payroll	7.70%	7.98%	7.94%	6.92%

This schedule is presented to illustrate the requirements to show information for 10 years. However, until a full 10-year trend is compiled, the Stations will present information for the years for which the information is available. Information presented in the schedule has been determined as of the Stations' most recent fiscal year-end in accordance with GASB 68.

Actuarial Assumptions

The following assumptions were developed and recommended based on an experience study performed in 2016:

- Investment Rate of Return – 8.00% per annum, compounded annually, composed of an assumed 2.50% inflation rate and a 5.5% real rate of return, net of investment expenses
- Mortality Rates – Active Mortality: RP-2014 Employee Mortality Tables for males and females multiplied by 90% with full generational projection using Scale BB
- Rates of Salary Increases – Inflation rate of 2.50%, plus productivity component of 100%, plus step-rate/promotional component
- Postretirement Mortality – The 2015 TRS of Texas Healthy Pensioner Mortality Tables, with full generational projection using Scale BB, used for service retirement annuitants, beneficiaries and survivors

## **SUPPLEMENTARY INFORMATION**

**HOUSTON PUBLIC MEDIA**  
(A Division of the University of Houston System)

Primary Institution Schedule of Functional Expenses  
Year Ended August 31, 2017

Schedule 1

Class	Programming and production (PRD)	Broadcasting, engineering and technical (BET)	Program information (PGM)	Total	Fundraising and membership development (FND)	Management and general (MGT)	Underwriting and grant solicitation (UND)	Total	Grand total
Salaries and wages	\$ 2,490,567	1,993,357	170,013	4,653,937	617,708	967,116	113,689	1,698,513	6,352,450
Fringe benefits	678,184	578,565	49,419	1,306,168	195,272	260,994	30,545	486,811	1,792,979
Financial and legal services	17	2,923	-	2,940	142,095	254,115	-	396,210	399,150
Fundraising	14,601	5,149	-	19,750	727,684	71,640	10	799,334	819,084
Membership fees	135,291	12,484	4,142	151,917	-	49,152	-	49,152	201,069
Other expenses	335,151	364,936	1,573	701,660	1,373,777	350,321	87	1,724,185	2,425,845
Mail services	397	3,500	14	3,911	166,464	1,263	33	167,760	171,671
Printing and reproduction services	3,378	18	2,241	5,637	26,519	12,998	-	39,517	45,154
Professional services	133,277	6,130	-	139,407	91,712	143,211	455	235,378	374,785
Program rights	3,814,029	11,300	12,728	3,838,057	12,817	43,741	-	56,558	3,894,615
Rental and leases	2,696	471,154	-	473,850	156	11,506	-	11,662	485,512
Repairs and maintenance	625	257,612	-	258,237	-	88,865	-	88,865	347,102
Supplies and materials	8,467	82,510	-	90,977	122,600	-	1,171	123,771	214,748
Telephone	9,351	182,019	-	191,370	60	758	-	818	192,188
Travel	23,876	7,081	12	30,969	11,464	18,410	389	30,263	61,232
Utilities	-	314,462	-	314,462	-	70	-	70	314,532
	7,649,907	4,293,200	240,142	12,183,249	3,488,328	2,274,160	146,379	5,908,867	18,092,116
In-kind	-	325,429	-	325,429	-	4,881,508	-	4,881,508	5,206,937
	\$ 7,649,907	4,618,629	240,142	12,508,678	3,488,328	7,155,668	146,379	10,790,375	23,299,053
Percentage of total expenses before depreciation	33%	20%	1%	54%	15%	32%	1%	46%	100%

**HOUSTON PUBLIC MEDIA**

(A Division of the University of Houston System)

Component Unit (HPMF) Schedule of Functional Expenses

Year Ended August 31, 2017

Schedule 2

Class	Grants to Primary	Programming and production (PRD)	Broadcasting, engineering and technical (BET)	Program information (PGM)	Fundraising and membership development (FND)	Management and general (MGT)	Underwriting and grant solicitation (UND)	Grand total
Financial and legal services	\$ -	-	-	-	121,014	93,801	-	214,815
Fundraising	-	13,404	42	980	716,597	71,524	590	803,137
Grants to KUHF-FM	6,038,472	-	-	-	-	-	-	6,038,472
Grants to KUHT-TV	6,038,472	-	-	-	-	-	-	6,038,472
Innovation and sustainability grants	-	-	353,118	-	-	-	-	353,118
Membership fees	-	45	-	-	-	2,852	-	2,897
Other expenses	-	49,780	11,747	63	469,294	23,815	1,120,829	1,675,528
Mail services	-	-	-	-	189,194	44	680	189,918
Printing and reproduction services	-	2,831	-	458	42,850	15,413	-	61,552
Professional services	-	3,899	-	-	80,489	12,341	-	96,729
Program rights	-	14,082	10,265	-	-	-	-	24,347
Rental and leases	-	108	-	-	208	1,125	-	1,441
Repairs and maintenance	-	-	-	-	-	448	-	448
Supplies and materials	-	64	159	-	151,573	30,891	26	182,713
Telephone	-	9,351	-	-	60	-	-	9,411
Travel	-	6,243	-	3,726	11,979	3,631	18	25,597
	\$ <u>12,076,944</u>	<u>99,807</u>	<u>375,331</u>	<u>5,227</u>	<u>1,783,258</u>	<u>255,885</u>	<u>1,122,143</u>	<u>15,718,595</u>

**HOUSTON PUBLIC MEDIA**  
(A Division of the University of Houston System)

Primary Institution Schedule of Functional Expenses  
Year Ended August 31, 2016

Schedule 3

Class	Programming and production (PRD)	Broadcasting, engineering and technical (BET)	Program information (PGM)	Total	Fundraising and membership development (FND)	Management and general (MGT)	Underwriting and grant solicitation (UND)	Total	Grand total
Salaries and wages	\$ 2,464,979	2,048,331	196,606	4,709,916	621,449	1,179,440	116,757	1,917,646	6,627,562
Fringe benefits	653,005	582,127	57,287	1,292,419	178,626	403,857	33,025	615,508	1,907,927
Financial and legal services	293	3,644	-	3,937	308,544	167,381	11	475,936	479,873
Fundraising	24,322	11,362	1,725	37,409	849,984	6,344	16	856,344	893,753
Membership fees	26,755	149	21	26,925	-	79,200	-	79,200	106,125
Other expenses	214,644	348,847	14,545	578,036	399,238	246,972	217	646,427	1,224,463
Postage	673	939	533	2,145	264,307	5,122	98	269,527	271,672
Printing and reproduction services	1,336	2,013	5,175	8,524	102,299	6,590	-	108,889	117,413
Professional services	193,053	1,802	15,593	210,448	582,807	98,710	712,695	1,394,212	1,604,660
Program rights	4,110,096	2,503	12,728	4,125,327	46,078	-	-	46,078	4,171,405
Rental and leases	6,354	362,298	1,000	369,652	26,360	6,555	-	32,915	402,567
Repairs and maintenance	50,346	275,534	-	325,880	3,208	31,167	-	34,375	360,255
Supplies and materials	6,198	316,800	695	323,693	16,122	84,052	2,066	102,240	425,933
Telephone	54	179,210	-	179,264	140	6,176	-	6,316	185,580
Travel	37,793	9,992	366	48,151	11,203	26,415	477	38,095	86,246
Utilities	-	356,887	-	356,887	-	386	-	386	357,273
Broadcasting fees	4,883	-	-	4,883	-	-	-	-	4,883
Debt service – KUHA Classical	-	-	-	-	-	207,750	-	207,750	207,750
	<u>7,794,784</u>	<u>4,502,438</u>	<u>306,274</u>	<u>12,603,496</u>	<u>3,410,365</u>	<u>2,556,117</u>	<u>865,362</u>	<u>6,831,844</u>	<u>19,435,340</u>
In-kind	-	480,161	-	480,161	-	6,129,696	-	6,129,696	6,609,857
	<u>\$ 7,794,784</u>	<u>4,982,599</u>	<u>306,274</u>	<u>13,083,657</u>	<u>3,410,365</u>	<u>8,685,813</u>	<u>865,362</u>	<u>12,961,540</u>	<u>26,045,197</u>
Percentage of total expenses before depreciation	30%	19%	1%	50%	13%	34%	3%	50%	100%



**HOUSTON PUBLIC MEDIA**

(A Division of the University of Houston System)

Component Unit (HPMF) Schedule of Functional Expenses

Year Ended August 31, 2016

Schedule 4

Class	Grants to Primary	Programming and production (PRD)	Broadcasting, engineering and technical (BET)	Program information (PGM)	Fundraising and membership development (FND)	Management and general (MGT)	Underwriting and grant solicitation (UND)	Grand total
Financial and legal services	\$ -	-	20	179	305,318	76,069	-	381,586
Fundraising	-	16,226	306	4,058	580,009	3,529	58	604,186
Grants to KUHF-FM	4,067,952	-	-	-	-	-	-	4,067,952
Grants to KUHA-FM	360,625	-	-	-	-	-	-	360,625
Grants to KUHT-TV	3,707,327	-	-	-	-	-	-	3,707,327
Membership fees	-	-	-	-	-	3,101	-	3,101
Other expenses	-	10,415	18,651	-	108,927	39,411	365,693	543,097
Mail services	-	-	-	-	231,215	27	-	231,242
Printing and reproduction services	-	497	501	238	84,290	-	-	85,526
Professional services	-	1,977	406	-	479,661	-	-	482,044
Rental and leases	-	1,350	1,228	75	20,238	5,994	-	28,885
Repairs and maintenance	-	-	26,243	-	-	442	-	26,685
Supplies and materials	-	3,114	773	-	623	760	110	5,380
Telemarketing services	-	-	-	-	186,845	-	-	186,845
Telephone	-	16,953	54	-	140	-	-	17,147
Travel	-	11,195	146	1,543	1,991	1,798	27	16,700
	\$ 8,135,904	61,727	48,328	6,093	1,999,257	131,131	365,888	10,748,328

Board of Regents  
University of Houston System  
Houston, Texas

As part of our audit of the financial statements of Houston Public Media (the Stations), a division of the University of Houston System (the UH System), as of and for the year ended August 31, 2017, we wish to communicate the following to you.

### **Audit Scope and Results**

#### **Auditor's Responsibility Under Auditing Standards Generally Accepted in the United States of America**

An audit performed in accordance with auditing standards generally accepted in the United States of America is designed to obtain reasonable, rather than absolute, assurance about the financial statements. In performing auditing procedures, we establish scopes of audit tests in relation to the financial statements taken as a whole. Our engagement does not include a detailed audit of every transaction. Our engagement letter more specifically describes our responsibilities.

These standards require communication of significant matters related to the financial statement audit that are relevant to the responsibilities of those charged with governance in overseeing the financial reporting process. Such matters are communicated in the remainder of this letter or have previously been communicated during other phases of the audit. The standards do not require the auditor to design procedures for the purpose of identifying other matters to be communicated with those charged with governance.

An audit of the financial statements does not relieve management or those charged with governance of their responsibilities. Our engagement letter more specifically describes your responsibilities.

#### **Qualitative Aspects of Significant Accounting Policies and Practices**

##### **Significant Accounting Policies**

The Stations' significant accounting policies are described in Note 2 of the audited financial statements.

##### **Alternative Accounting Treatments**

No matters are reportable.

##### **Management Judgments and Accounting Estimates**

No matters are reportable.

### Financial Statement Disclosures

The following areas involve particularly sensitive financial statement disclosures for which we are prepared to discuss the issues involved and related judgments made in formulating those disclosures:

- Component Unit – Houston Public Media Foundation (HPMF)
- Pension plans

### Audit Adjustments

During the course of any audit, an auditor may propose adjustments to financial statement amounts. Management evaluates our proposals and records those adjustments which, in its judgment, are required to prevent the financial statements from being materially misstated. Some adjustments proposed were not recorded because their aggregate effect is not currently material; however, they involve areas in which adjustments in the future could be material, individually or in the aggregate.

Areas in which adjustments were proposed include:

- Proposed audit adjustments recorded:
  - Grants receivable
  - Prior year accounts payable audit adjustment reversal in 2017
- Proposed audit adjustments not recorded:
  - Attached is a summary of uncorrected misstatements we aggregated during the current engagement and pertaining to the latest period presented that were determined by management to be immaterial, both individually and in the aggregate, to the financial statements as a whole.

### Auditor's Judgments About the Quality of the Stations' Accounting Principles

No matters are reportable.

### Significant Issues Discussed with Management

During the audit process, the following issues were discussed or were the subject of correspondence with management:

- Delays in providing supporting documentation for reconciliation of net position
- Significant post-closing entries provided by client after completion of fieldwork

### Other Material Written Communication

Listed below is another material written communication between management and us related to the audit:

- Management representation letter (attached)

### **Internal Control Over Financial Reporting**

In planning and performing our audit of the financial statements of the Stations as of and for the year ended August 31, 2017, in accordance with auditing standards generally accepted in the United States of America, we considered the Stations' internal control over financial reporting (internal control) as a basis for designing our auditing procedures for the purpose of expressing our opinion on the financial statements, but not for the purpose of expressing an opinion on the effectiveness of the Stations' internal control. Accordingly, we do not express an opinion on the effectiveness of the Stations' internal control.

Our consideration of internal control was for the limited purpose described in the preceding paragraph and was not designed to identify all deficiencies in internal control that might be significant deficiencies or material weaknesses and, therefore, there can be no assurance that all deficiencies, significant deficiencies or material weaknesses have been identified.

A deficiency in internal control exists when the design or operation of a control does not allow management or employees, in the normal course of performing their assigned functions, to prevent or detect and correct misstatements of the Stations' financial statements on a timely basis. A deficiency in design exists when a control necessary to meet a control objective is missing or an existing control is not properly designed so that, even if the control operates as designed, a control objective would not be met. A deficiency in operation exists when a properly designed control does not operate as designed or when the person performing the control does not possess the necessary authority or competence to perform the control effectively.

A material weakness is a deficiency, or a combination of deficiencies, in internal control, such that there is a reasonable possibility that a material misstatement of the Stations' financial statements will not be prevented or detected and corrected on a timely basis.

A significant deficiency is a deficiency, or a combination of deficiencies, in internal control that is less severe than a material weakness, yet important enough to merit attention by those charged with governance.

We observed the following matters that we consider to be deficiencies.

#### Deficiencies

We observed matters that we consider to be deficiencies that we communicated to management orally.

This communication is intended solely for the information and use of management, the Board of Regents, and others within the Stations and is not intended to be and should not be used by anyone other than these specified parties.

*BKD, LLP*

March 15, 2018



A SERVICE OF THE  
UNIVERSITY OF HOUSTON

4343 Elgin St.  
Houston, Texas 77204-0008

houstonpublicmedia.org  
TV 8 | PBS News 88.7 | NPR Classical

March 15, 2018

**BKD, LLP**

Certified Public Accountants  
2800 Post Oak Boulevard, Suite 3200  
Houston, Texas 77056

We are providing this letter in connection with your audits of our financial statements of Houston Public Media (the Stations), a division of the University of Houston System, as of and for the years ended August 31, 2017 and 2016. We confirm that we are responsible for the fair presentation of the financial statements in conformity with accounting principles generally accepted in the United States of America. We are also responsible for adopting sound accounting policies, establishing and maintaining effective internal control over financial reporting, operations and compliance, and preventing and detecting fraud.

Certain representations in this letter are described as being limited to matters that are material. Items are considered material, regardless of size, if they involve an omission or misstatement of accounting information that, in light of surrounding circumstances, makes it probable that the judgment of a reasonable person relying on the information would be changed or influenced by the omission or misstatement.

We confirm, to the best of our knowledge and belief, the following:

1. We have fulfilled our responsibilities, as set out in the terms of our engagement letter dated June 26, 2017, for the preparation and fair presentation of the financial statements in accordance with accounting principles generally accepted in the United States of America.
2. We acknowledge our responsibility for the design, implementation and maintenance of internal control relevant to the preparation and fair presentation of financial statements that are free from material misstatement, whether due to fraud or error.
3. We acknowledge our responsibility for the design, implementation and maintenance of internal control to prevent and detect fraud.
4. We have reviewed and approved a draft of the financial statements and related notes referred to above, which you prepared in connection with your audit of our financial statements. We acknowledge that we are responsible for the fair presentation of the financial statements and related notes.

5. We have provided you with:
  - (a) Access to all information of which we are aware that is relevant to the preparation and fair presentation of the financial statements such as records, documentation and other matters.
  - (b) Additional information that you have requested from us for the purpose of the audit.
  - (c) Unrestricted access to persons within the entity from whom you determined it necessary to obtain audit evidence.
  - (d) All minutes of meetings of the governing body held through the date of this letter.
  - (e) All significant contracts and grants.
6. All transactions have been recorded in the accounting records and are reflected in the financial statements.
7. We have informed you of all current risks of a material amount that are not adequately prevented or detected by entity procedures with respect to:
  - (a) Misappropriation of assets.
  - (b) Misrepresented or misstated assets, liabilities or net position.
8. We believe the effects of the uncorrected financial statement misstatements summarized in the attached schedule are immaterial, both individually and in the aggregate, to the financial statements taken as a whole.
9. We have no knowledge of any known or suspected:
  - (a) Fraudulent financial reporting or misappropriation of assets involving management or employees who have significant roles in internal control.
  - (b) Fraudulent financial reporting or misappropriation of assets involving others that could have a material effect on the financial statements.
10. We have no knowledge of any allegations of fraud or suspected fraud affecting the Stations received in communications from employees, customers, regulators, suppliers or others.
11. We have disclosed to you the identity of the entity's related parties and all the related party relationships and transactions of which we are aware. Related party relationships and transactions have been appropriately accounted for and disclosed in accordance with accounting principles generally accepted in the United States of America. We understand that the term related party refers to an affiliate; management, and members of their immediate families, component units; and any other party with which the entity may deal if it can significantly influence, or be influenced by, the management or operating policies of the other. The term affiliate refers to a party that directly or indirectly controls, or is controlled by, or is under common control with us.

12. Except as reflected in the financial statements, there are no:
  - (a) Plans or intentions that may materially affect carrying values or classifications of assets and liabilities.
  - (b) Material transactions omitted or improperly recorded in the financial statements.
  - (c) Material gain/loss contingencies requiring accrual or disclosure, including those arising from environmental remediation obligations.
  - (d) Events occurring subsequent to the statement of net position date through the date of this letter requiring adjustment or disclosure in the financial statements.
  - (e) Agreements to purchase assets previously sold.
  - (f) Restrictions on cash balances or compensating balance agreements.
  - (g) Guarantees, whether written or oral, under which the Stations is contingently liable.
13. We have disclosed to you all known instances of noncompliance or suspected noncompliance with laws and regulations whose effects should be considered when preparing financial statements.
14. We have no reason to believe the Stations owe any penalties or payments under the Employer Shared Responsibility Provisions of the Patient Protection and Affordable Care Act nor have we received any correspondence from the IRS or other agencies indicating such payments may be due.
15. We have disclosed to you all known actual or possible litigation and claims whose effects should be considered when preparing the financial statements. The effects of all known actual or possible litigation and claims have been accounted for and disclosed in accordance with accounting principles generally accepted in the United States of America.
16. Adequate provisions and allowances have been accrued for any material losses from:
  - (a) Uncollectible receivables.
  - (b) Purchase commitments in excess of normal requirements or above prevailing market prices.
17. Except as disclosed in the financial statements, we have:
  - (a) Satisfactory title to all recorded assets, and they are not subject to any liens, pledges or other encumbrances.
  - (b) Complied with all aspects of contractual and grant agreements, for which noncompliance would materially affect the financial statements.

18. We have not been designated as a potentially responsible party (PRP or equivalent status) by the Environmental Protection Agency (EPA) or other cognizant regulatory agency with authority to enforce environmental laws and regulations.
19. With regard to deposit and investment activities:
  - (a) All deposit, repurchase and reverse repurchase agreements and investment transactions have been made in accordance with legal and contractual requirements.
  - (b) Disclosures of deposit and investment balances and risks in the financial statements are consistent with our understanding of the applicable laws regarding enforceability of any pledges of collateral.
  - (c) We understand that your audit does not represent an opinion regarding the enforceability of any collateral pledges.
20. With respect to any nonattest services you have provided us during the year, including preparation of the financial statements and related notes:
  - (a) We have designated a qualified management-level individual to be responsible and accountable for overseeing the nonattest services.
  - (b) We have established and monitored the performance of the nonattest services to ensure that they meet our objectives.
  - (c) We have made any and all decisions involving management functions with respect to the nonattest services and accept full responsibility for such decisions.
  - (d) We have evaluated the adequacy of the services performed and any findings that resulted.
21. The financial statements disclose all significant estimates and material concentrations known to us. Significant estimates are estimates at the balance sheet date which could change materially within the next year. Concentrations refer to volumes of business, revenues, available sources of supply, or markets for which events could occur which would significantly disrupt normal finances within the next year. Significant assumptions used by us in making accounting estimates, including those measured at fair value, are reasonable.
22. The fair values of financial and nonfinancial assets and liabilities, if any, recognized in the financial statements or disclosed in the notes thereto are reasonable estimates based on the methods and assumptions used. The methods and significant assumptions used result in measurements of fair value appropriate for financial statement recognition and disclosure purposes and have been applied consistently from period to period, taking into account any changes in circumstances. The significant assumptions appropriately reflect market participant assumptions.
23. The supplementary information required by the Governmental Accounting Standards Board (GASB), consisting of management's discussion and analysis and pension information, has been prepared and is measured and presented in conformity with the



applicable GASB pronouncements, and we acknowledge our responsibility for the information. The information contained therein is based on all facts, decisions and conditions currently known to us and is measured using the same methods and assumptions as were used in the preparation of the financial statements. We believe the significant assumptions underlying the measurement and/or presentation of the information are reasonable and appropriate. There has been no change from the preceding period in the methods of measurement and presentation.

24. With regard to supplementary information:

- (a) We acknowledge our responsibility for the presentation of the supplementary information in accordance with the applicable criteria.
- (b) We believe the supplementary information is fairly presented, both in form and content, in accordance with the applicable criteria.
- (c) The methods of measurement and presentation of the supplementary information are unchanged from those used in the prior period.
- (d) We believe the significant assumptions or interpretations underlying the measurement and/or presentation of the supplementary information are reasonable and appropriate.
- (e) If the supplementary information is not presented with the audited financial statements, we acknowledge we will make the audited financial statements readily available to intended users of the supplementary information no later than the date such information and the related auditor's report are issued.

25. There are no other know matters that would require correction in the financial statements.



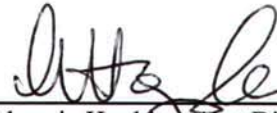
---

Devi Bala, Assistant VP  
Business Services  
University of Houston



---

Lisa Shumate, Associate Vice President and  
General Manager of Houston Public Media



---

Almarie Hopkins, Asst Director of Business  
Operations

# Houston Public Media

## ATTACHMENT

This analysis and the attached "Schedule of Uncorrected Misstatements (Adjustments Passed)" reflects the effects on the financial statements if the uncorrected misstatements identified were corrected.

### QUANTITATIVE ANALYSIS

	Before Misstatements	Misstatements	Subsequent to Misstatements	% Change
Current Assets	1,289,039	(21,246)	1,267,793	-1.65%
Non-Current Assets & Deferred Outflows	7,507,640		7,507,640	
Current Liabilities	(10,773,903)		(10,773,903)	
Non-Current Liabilities & Deferred Inflows	(4,324,681)		(4,324,681)	
Current Ratio	0.120		0.118	-1.67%
Total Assets & Deferred Outflows	8,796,679	(21,246)	8,775,433	-0.24%
Total Liabilities & Deferred Inflows	(15,098,584)		(15,098,584)	
Total Net Position	6,301,905	21,246	6,323,151	0.34%
Operating Revenues	(23,775,770)		(23,775,770)	
Operating Expenses	24,183,100	21,246	24,204,346	0.09%
Nonoperating (Revenues) Exp	(105,798)		(105,798)	
Change in Net Position	301,532	21,246	322,778	7.05%

**Major Enterprise Fund**

SCHEDULE OF UNCORRECTED MISSTATEMENTS (ADJUSTMENTS PASSED)

Description	Financial Statement Line Item	Factual (F), Judgmental (J), Projected (P)	Assets & Deferred Outflows				Liabilities & Deferred Inflows				Operating				Net Position		Net Effect on Following Year		
			Current		Non-Current		Current		Non-Current		Revenues	Expenses	(Revenues) Exp	Net Position		Change in Net			
			DR	(CR)	DR	(CR)	DR	(CR)	DR	(CR)	DR	(CR)	DR	(CR)	DR	(CR)	DR	(CR)	DR
Reserving accounts receivable allowance balance as of 8/31/2017 due to receivables outstanding over 2 years		J	(21,246)	0	0	0	0	0	0	21,246	0	0	0	0	0	0	0	0	0
	Accounts receivable, net		(21,246)															N/A	N/A
	Operating expenses									21,246								N/A	N/A
			0	0	0	0	0	0	0	0	0	0	0	0	0	0	0	0	0
			0	0	0	0	0	0	0	0	0	0	0	0	0	0	0	0	0
			0	0	0	0	0	0	0	0	0	0	0	0	0	0	0	0	0
			0	0	0	0	0	0	0	0	0	0	0	0	0	0	0	0	0
			0	0	0	0	0	0	0	0	0	0	0	0	0	0	0	0	0
<b>Total passed adjustments</b>			(21,246)	0	0	0	0	0	0	21,246	0	0	0	0	0	0	0	0	0
															<b>Impact on Change in Net Position</b>	<b>21,246</b>			
															<b>Impact on Net Position</b>	<b>21,246</b>			